

bsm-61391R**[Primary Antibody]****gamma Catenin Recombinant Rabbit mAb****BioSS**
ANTIBODIES

www.bioss.com.cn

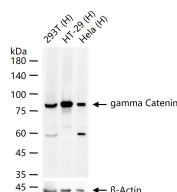
sales@bioss.com.cn

techsupport@bioss.com.cn

400-901-9800

— DATASHEET —

Host: Rabbit	Isotype: IgG	Applications: WB (1:500-2000) IHC-P (1:100-200) IHC-F (1:100-200) IF (1:50-200) Flow-Cyt (1:50-100) ICC/IF (1:50-200) Reactivity: Human (predicted: Mouse, Rat, Dog) Predicted MW.: 82 Subcellular Location: Cell membrane ,Cytoplasm
Clonality: Recombinant		
GeneID: 3728	SWISS: P14923	
Target: gamma Catenin		
Immunogen: A synthesized peptide derived from human gamma Catenin: 1-130/745.		
Purification: affinity purified by Protein A		
Storage: 10mM phosphate buffered saline(pH 7.4) with 150mM sodium chloride, 0.05% BSA, 0.02% Proclin300 and 50% glycerol. Store at 4°C for short term. Store at -20°C for long term. Avoid repeated freeze/thaw cycles.		
Background: Common junctional plaque protein. The membrane-associated plaques are architectural elements in an important strategic position to influence the arrangement and function of both the cytoskeleton and the cells within the tissue.		

— VALIDATION IMAGES —

25 ug total protein per lane of various lysates (see on figure) probed with gamma Catenin monoclonal antibody, unconjugated (bsm-61391R) at 1:1000 dilution and 4°C overnight incubation. Followed by conjugated secondary antibody incubation at r.t. for 60 min.