

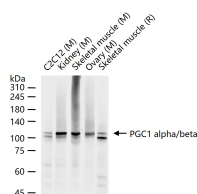
**bsm-61390R****[ Primary Antibody ]****PGC1 alpha/beta Recombinant Rabbit mAb****Bioss**  
**ANTIBODIES**

www.bioss.com.cn

sales@bioss.com.cn

techsupport@bioss.com.cn

400-901-9800

**— DATASHEET —****Host:** Rabbit**Isotype:** IgG**Clonality:** Recombinant**CloneNo.:** 17C3**GeneID:** 10891**SWISS:** Q9UBK2**Target:** PGC1 alpha/beta**Immunogen:** A synthesized peptide derived from human PGC1 alpha: 765-798.**Purification:** affinity purified by Protein A**Storage:** 10mM phosphate buffered saline(pH 7.4) with 150mM sodium chloride, 0.05% BSA, 0.02% Proclin300 and 50% glycerol.  
Store at 4°C for short term. Store at -20°C for long term. Avoid repeated freeze/thaw cycles.**Background:** Transcriptional coactivator for steroid receptors and nuclear receptors. Greatly increases the transcriptional activity of PPARG and thyroid hormone receptor on the uncoupling protein promoter. Can regulate key mitochondrial genes that contribute to the program of adaptive thermogenesis.**Applications:** WB (1:500-2000)**Reactivity:** Mouse, Rat  
(predicted: Human)**Predicted  
MW.:** 91113**Subcellular  
Location:** Nucleus**— VALIDATION IMAGES —**

25 ug total protein per lane of various lysates (see on figure) probed with PGC1 alpha/beta monoclonal antibody, unconjugated (bsm-61390R) at 1:1000 dilution and 4°C overnight incubation. Followed by conjugated secondary antibody incubation at r.t. for 60 min.