

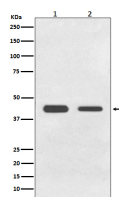
**bsm-61387R****[ Primary Antibody ]****BMP11 Recombinant Rabbit mAb****Bioss**  
**ANTIBODIES**

www.bioss.com.cn

sales@bioss.com.cn

techsupport@bioss.com.cn

400-901-9800

**— DATASHEET —****Host:** Rabbit**Isotype:** IgG**Clonality:** Recombinant**GeneID:** 10220**SWISS:** O95390**Target:** BMP11**Immunogen:** A synthesized peptide derived from human BMP11: 350-407.**Purification:** affinity purified by Protein A**Storage:** 10mM phosphate buffered saline(pH 7.4) with 150mM sodium chloride, 0.05% BSA, 0.02% Proclin300 and 50% glycerol. Store at 4°C for short term. Store at -20°C for long term. Avoid repeated freeze/thaw cycles.**Background:** Secreted signal that acts globally to regulate anterior/posterior axial patterning during development. May play critical roles in patterning both mesodermal and neural tissues**Applications:** WB (1:1000-2000)**IHC-P** (1:100-200)**IHC-F** (1:100-200)**IF** (1:50-200)**ICC/IF** (1:50-200)**Reactivity:** Human, Rat**Predicted  
MW.:** 45**Subcellular  
Location:** Secreted ,Cytoplasm**— VALIDATION IMAGES —**

Western blot analysis of (1) HeLa cell lysate; (2) C6 cell lysate. Using BMP11 (bsm-61387R) monoclonal antibody at 1:1000 dilution and 4°C overnight incubation. Followed by conjugated secondary antibody incubation at r.t. for 60 min.