

bsm-61386R**[Primary Antibody]**

www.bioss.com.cn

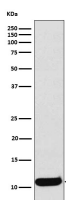
sales@bioss.com.cn

techsupport@bioss.com.cn

400-901-9800

CCL19 Recombinant Rabbit mAb**— DATASHEET —**

| | | |
|--|----------------------|--|
| Host: Rabbit | Isotype: IgG | Applications: WB (1:1000-2000) Flow-Cyt (1:50-100) |
| Clonality: Recombinant | | Reactivity: Human |
| GeneID: 6363 | SWISS: Q99731 | |
| Target: CCL19 | | |
| Immunogen: A synthesized peptide derived from human CCL19: 50-98/98. | | |
| Purification: affinity purified by Protein A | | |
| Storage: 10mM phosphate buffered saline(pH 7.4) with 150mM sodium chloride, 0.05% BSA, 0.02% Proclin300 and 50% glycerol. Store at 4°C for short term. Store at -20°C for long term. Avoid repeated freeze/thaw cycles. | | |
| Background: May play a role not only in inflammatory and immunological responses but also in normal lymphocyte recirculation and homing. May play an important role in trafficking of T-cells in thymus, and T-cell and B-cell migration to secondary lymphoid organs. Binds to chemokine receptor CCR7. Recombinant CCL19 shows potent chemotactic activity for T-cells and B-cells but not for granulocytes and monocytes. Binds to atypical chemokine receptor ACKR4 and mediates the recruitment of beta-arrestin (ARRB1/2) to ACKR4. | | |
| | | Predicted MW.: 11 |
| | | Subcellular Location: Extracellular matrix |

— VALIDATION IMAGES —

Western blot analysis of Human Macrophage Inflammatory Protein 3 beta recombinant protein lysate. Using CCL19 (bsm-61386R) monoclonal antibody at 1:1000 dilution and 4°C overnight incubation. Followed by conjugated secondary antibody incubation at r.t. for 60 min.