

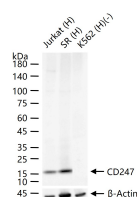
bsm-61374R**[Primary Antibody]****BioSS**
ANTIBODIES

www.bioss.com.cn

sales@bioss.com.cn

techsupport@bioss.com.cn

400-901-9800

CD247 Recombinant Rabbit mAb**DATASHEET****Host:** Rabbit**Clonality:** Recombinant**GeneID:** 919**Target:** CD247**Isotype:** IgG**CloneNo.:** 11D7**SWISS:** P20963**Applications:** WB (1:500-2000)**Flow-Cyt** (1:50-100)**ICC/IF** (1:50-200)**Reactivity:** Human**Immunogen:** A synthesized peptide derived from human CD247: 114-164.**Purification:** affinity purified by Protein A**Storage:** 10mM phosphate buffered saline(pH 7.4) with 150mM sodium chloride, 0.05% BSA, 0.02% Proclin300 and 50% glycerol. Store at 4°C for short term. Store at -20°C for long term. Avoid repeated freeze/thaw cycles.**Background:** Defects in CD3D are a cause of severe combined immunodeficiency autosomal recessive T-cell-negative/B-cell-positive/NK-cell-positive (T(-)/B(+)/NK(+)) SCID). A form of severe combined immunodeficiency (SCID), a genetically and clinically heterogeneous group of rare congenital disorders characterized by impairment of both humoral and cell-mediated immunity, leukopenia, and low or absent antibody levels.**Predicted
MW.:** 19**Subcellular
Location:** Cell membrane**VALIDATION IMAGES**

25 ug total protein per lane of various lysates (see on figure) probed with CD247 monoclonal antibody, unconjugated (bsm-61374R) at 1:1000 dilution and 4°C overnight incubation. Followed by conjugated secondary antibody incubation at r.t. for 60 min.