

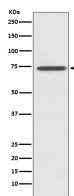
**bsm-61370R****[ Primary Antibody ]****Bioss**  
**ANTIBODIES**

www.bioss.com.cn

sales@bioss.com.cn

techsupport@bioss.com.cn

400-901-9800

**RIPK1 Recombinant Rabbit mAb****— DATASHEET —****Host:** Rabbit**Isotype:** IgG**Clonality:** Recombinant**GeneID:** 8737**SWISS:** Q13546**Target:** RIPK1**Immunogen:** A synthesized peptide derived from human RIP 1: 289-490.**Purification:** affinity purified by Protein A**Storage:** 10mM phosphate buffered saline(pH 7.4) with 150mM sodium chloride, 0.05% BSA, 0.02% Proclin300 and 50% glycerol.  
Store at 4°C for short term. Store at -20°C for long term. Avoid repeated freeze/thaw cycles.**Background:** Essential adapter molecule for the activation of NF-kappa-B. Following different upstream signals (binding of inflammatory cytokines, stimulation of pathogen recognition receptors, or DNA damage), particular RIPK1-containing complexes are formed, initiating a limited number of cellular responses.**Applications:** **WB** (1:1000-2000)**Flow-Cyt** (1:50-100)**Reactivity:** Human**Predicted  
MW.:** 76**Subcellular  
Location:** Cell membrane ,Cytoplasm**— VALIDATION IMAGES —**

Western blot analysis of HeLa cell lysate. Using RIPK1 (bsm-61370R) monoclonal antibody at 1:1000 dilution and 4°C overnight incubation. Followed by conjugated secondary antibody incubation at r.t. for 60 min.