

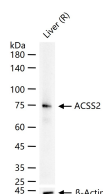
bsm-61364R**[Primary Antibody]****BioSS**
ANTIBODIES

www.bioss.com.cn

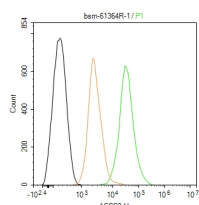
sales@bioss.com.cn

techsupport@bioss.com.cn

400-901-9800

ACSS2 Recombinant Rabbit mAb**— DATASHEET —****Host:** Rabbit**Clonality:** Recombinant**GeneID:** 55902**Target:** ACSS2**Isotype:** IgG**CloneNo.:** 8E4**SWISS:** Q9NR19**Immunogen:** A synthesized peptide derived from human ACSS2: 100-125/701.**Purification:** affinity purified by Protein A**Storage:** 10mM phosphate buffered saline(pH 7.4) with 150mM sodium chloride, 0.05% BSA, 0.02% Proclin300 and 50% glycerol. Store at 4°C for short term. Store at -20°C for long term. Avoid repeated freeze/thaw cycles.**Background:** Catalyzes the synthesis of acetyl-CoA from short-chain fatty acids. Acetate is the preferred substrate. Can also utilize propionate with a much lower affinity. Nuclear ACSS2 promotes glucose deprivation-induced lysosomal biogenesis and autophagy, tumor cell survival and brain tumorigenesis.**Applications:** WB (1:500-2000)**Flow-Cyt** (1:50-100)**ICC/IF** (1:50-200)**Reactivity:** Human, Rat
(predicted: Mouse)**Predicted MW.:** 79**— VALIDATION IMAGES —**

25 ug total protein per lane of various lysates (see on figure) probed with ACSS2 monoclonal antibody, unconjugated (bsm-61364R) at 1:1000 dilution and 4°C overnight incubation. Followed by conjugated secondary antibody incubation at r.t. for 60 min.



The HepG2 (H) cells were fixed with 4% PFA (10 min at r.t.) and then permeabilized with 90% ice-cold methanol for 20 min at -20°C, the cells then were incubated in 5% BSA to block non-specific protein-protein interactions (30 min at r.t.), followed by secondary antibody incubation for 40 min at room temperature. Primary Antibody (green): Rabbit Anti-ACSS2 antibody (bsm-61364R, 1:100); Isotype Control (orange): Rabbit IgG (bs-0295P). Blank control (black): PBS. Acquisition of 20,000 events was performed.