

bsm-61360R**[Primary Antibody]**

Estrogen receptor beta Recombinant Rabbit mAb

Bioss
ANTIBODIES

www.bioss.com.cn

sales@bioss.com.cn

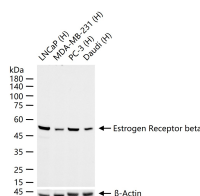
techsupport@bioss.com.cn

400-901-9800

DATASHEET

Host: Rabbit**Isotype:** IgG**Clonality:** Recombinant**CloneNo.:** 9F1**GeneID:** 2100**SWISS:** Q92731**Target:** Estrogen Receptor beta**Immunogen:** A synthesized peptide derived from human Estrogen receptor beta: 480-530/530.**Purification:** affinity purified by Protein A**Storage:** 10mM phosphate buffered saline(pH 7.4) with 150mM sodium chloride, 0.05% BSA, 0.02% Proclin300 and 50% glycerol. Store at 4°C for short term. Store at -20°C for long term. Avoid repeated freeze/thaw cycles.**Background:** Nuclear hormone receptor. Binds estrogens with an affinity similar to that of ESR1/ER-alpha, and activates expression of reporter genes containing estrogen response elements (ERE) in an estrogen-dependent manner.**Applications:** WB (1:1000-2000)**Reactivity:** Human**Predicted
MW.:** 59**Subcellular
Location:** Nucleus

VALIDATION IMAGES



25 ug total protein per lane of various lysates (see on figure) probed with Estrogen Receptor beta monoclonal antibody, unconjugated (bsm-61360R) at 1:2000 dilution and 4°C overnight incubation. Followed by conjugated secondary antibody incubation at r.t. for 60 min.