

**bsm-61356R****[ Primary Antibody ]****Caspase 14 Recombinant Rabbit mAb****BioSS**  
**ANTIBODIES**

www.bioss.com.cn

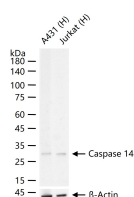
sales@bioss.com.cn

techsupport@bioss.com.cn

400-901-9800

**— DATASHEET —**

<b>Host:</b> Rabbit	<b>Isotype:</b> IgG	<b>Applications:</b> <b>WB</b> (1:500-2000) <b>IHC-P</b> (1:100-200) <b>IHC-F</b> (1:100-200) <b>IF</b> (1:50-200) <b>Flow-Cyt</b> (1:50-100) <b>ICC/IF</b> (1:50-200) <b>IP</b> (1:20-50)  <b>Reactivity:</b> Human (predicted: Mouse, Rat)  <b>Predicted MW.:</b> 28  <b>Subcellular Location:</b> Cytoplasm
<b>Clonality:</b> Recombinant		
<b>GeneID:</b> 23581	<b>SWISS:</b> P31944	
<b>Target:</b> Caspase 14		
<b>Immunogen:</b> A synthesized peptide derived from human Caspase 14: 101-155.		
<b>Purification:</b> affinity purified by Protein A		
<b>Storage:</b> 10mM phosphate buffered saline(pH 7.4) with 150mM sodium chloride, 0.05% BSA, 0.02% Proclin300 and 50% glycerol. Store at 4°C for short term. Store at -20°C for long term. Avoid repeated freeze/thaw cycles.		
<b>Background:</b> Non-apoptotic caspase involved in epidermal differentiation. Is the predominant caspase in epidermal stratum corneum. Seems to play a role in keratinocyte differentiation and is required for cornification. Regulates maturation of the epidermis by proteolytically processing filaggrin. In vitro has a preference for the substrate [WY]-X-X-D motif and is active on the synthetic caspase substrate WEHD-ACF.		

**— VALIDATION IMAGES —**

25 ug total protein per lane of various lysates  
(see on figure) probed with Caspase 14  
monoclonal antibody, unconjugated  
(bsm-61356R) at 1:1000 dilution and 4°C  
overnight incubation. Followed by conjugated  
secondary antibody incubation at r.t. for 60 min.