

bsm-61355R**[Primary Antibody]****BioSS**
ANTIBODIES

www.bioss.com.cn

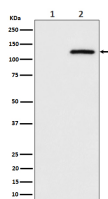
sales@bioss.com.cn

techsupport@bioss.com.cn

400-901-9800

phospho-CBL (Ser669) Recombinant Rabbit mAb**— DATASHEET —**

Host: Rabbit	Isotype: IgG	Applications: WB (1:1000-2000)
Clonality: Recombinant	SWISS: P22681	Reactivity: Human, Mouse, Rat
Target: CBL (Ser669)		Predicted MW.: 100
Immunogen: A synthesized peptide derived from human CBL around the phosphorylation site of S669: SS-pS-AN.		Subcellular Location: Cell membrane ,Cytoplasm
Purification: affinity purified by Protein A		
Storage: 10mM phosphate buffered saline(pH 7.4) with 150mM sodium chloride, 0.05% BSA, 0.02% Proclin300 and 50% glycerol. Store at 4°C for short term. Store at -20°C for long term. Avoid repeated freeze/thaw cycles.		
Background: Participates in signal transduction in hematopoietic cells. Adapter protein that functions as a negative regulator of many signaling pathways that start from receptors at the cell surface. Acts as an E3 ubiquitin-protein ligase, which accepts ubiquitin from specific E2 ubiquitin-conjugating enzymes, and then transfers it to substrates promoting their degradation by the proteasome.		

— VALIDATION IMAGES —

Western blot analysis of (1) HeLa cell lysate; (2) HeLa cell treated with pervanadate lysate. Using Phospho-CBL (Ser669) (bsm-61355R) monoclonal antibody at 1:1000 dilution and 4°C overnight incubation. Followed by conjugated secondary antibody incubation at r.t. for 60 min.