

bsm-61348R**[Primary Antibody]****BioSS**
ANTIBODIES

www.bioss.com.cn

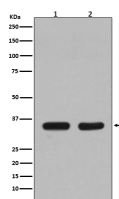
sales@bioss.com.cn

techsupport@bioss.com.cn

400-901-9800

CDC34 Recombinant Rabbit mAb**— DATASHEET —**

| | | |
|---|----------------------|--|
| Host: Rabbit | Isotype: IgG | Applications: WB (1:1000-2000) Flow-Cyt (1:50-100) ICC/IF (1:50-200) IP (1:20-50) Reactivity: Human, Mouse, Rat Predicted MW.: 27 Subcellular Location: Cytoplasm ,Nucleus |
| Clonality: Recombinant | | |
| GeneID: 997 | SWISS: P49427 | |
| Target: CDC34 | | |
| Immunogen: A synthesized peptide derived from human CDC34: 2-236. | | |
| Purification: affinity purified by Protein A | | |
| Storage: 10mM phosphate buffered saline(pH 7.4) with 150mM sodium chloride, 0.05% BSA, 0.02% Proclin300 and 50% glycerol. Store at 4°C for short term. Store at -20°C for long term. Avoid repeated freeze/thaw cycles. | | |
| Background: Involved in ubiquitin conjugation and degradation of CREM isoform ICERIIgamma and ATF15 resulting in abrogation of ICERIIgamma- and ATF5-mediated repression of cAMP-induced transcription during both meiotic and mitotic cell cycles. Involved in the regulation of the cell cycle G2/M phase through its targeting of the WEE1 kinase for ubiquitination and degradation. | | |

— VALIDATION IMAGES —

Western blot analysis of (1) Jurkat cell lysate; (2) NIH/3T3 cell lysate. Using CDC34 (bsm-61348R) monoclonal antibody at 1:1000 dilution and 4°C overnight incubation. Followed by conjugated secondary antibody incubation at r.t. for 60 min.