

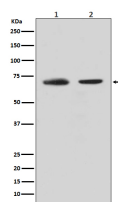
**bsm-61342R****[ Primary Antibody ]****CDC40 Recombinant Rabbit mAb****Bioss**  
**ANTIBODIES**

www.bioss.com.cn

sales@bioss.com.cn

techsupport@bioss.com.cn

400-901-9800

**— DATASHEET —****Host:** Rabbit**Isotype:** IgG**Clonality:** Recombinant**GeneID:** 51362**SWISS:** O60508**Target:** CDC40**Immunogen:** A synthesized peptide derived from human CDC40: 50-100/579.**Purification:** affinity purified by Protein A**Storage:** 10mM phosphate buffered saline(pH 7.4) with 150mM sodium chloride, 0.05% BSA, 0.02% Proclin300 and 50% glycerol. Store at 4°C for short term. Store at -20°C for long term. Avoid repeated freeze/thaw cycles.**Background:** Required for pre-mRNA splicing as component of the activated spliceosome. Plays an important role in embryonic brain development; this function does not require proline isomerization.**Applications:** WB (1:1000-2000)**IHC-P** (1:100-200)**IHC-F** (1:100-200)**IF** (1:50-200)**Flow-Cyt** (1:50-100)**ICC/IF** (1:50-200)**Reactivity:** Human, Mouse, Rat**Predicted  
MW.:** 66**Subcellular  
Location:** Nucleus**— VALIDATION IMAGES —**

Western blot analysis of (1) HeLa cell lysate; (2) K562 cell lysate. Using CDC40 (bsm-61342R) monoclonal antibody at 1:1000 dilution and 4°C overnight incubation. Followed by conjugated secondary antibody incubation at r.t. for 60 min.