

**bsm-61341R****[ Primary Antibody ]**

**BioSS**  
ANTIBODIES

www.bioss.com.cn

sales@bioss.com.cn

techsupport@bioss.com.cn

400-901-9800

## Caspase 2 Recombinant Rabbit mAb

### — DATASHEET —

**Host:** Rabbit**Isotype:** IgG**Clonality:** Recombinant**GeneID:** 835**SWISS:** P42575**Target:** Caspase 2**Immunogen:** A synthesized peptide derived from human Caspase 2: 300-452/452.**Purification:** affinity purified by Protein A

**Storage:** 10mM phosphate buffered saline(pH 7.4) with 150mM sodium chloride, 0.05% BSA, 0.02% Proclin300 and 50% glycerol. Store at 4°C for short term. Store at -20°C for long term. Avoid repeated freeze/thaw cycles.

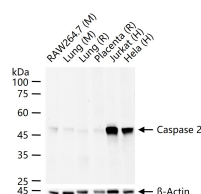
**Background:** Caspase-2 is a Class I caspase with a long prodomain necessary for nuclear localization. Caspase-2 is the nuclear apoptotic respondent to cellular genotoxic stress or mitotic catastrophe. Activation occurs upon recruitment to a complex containing a p53-induced death domain protein, PIDD.

**Applications:** WB (1:500-2000)**IHC-P** (1:100-200)**IHC-F** (1:100-200)**IF** (1:50-200)**Flow-Cyt** (1:50-100)**ICC/IF** (1:50-200)**Reactivity:** Human, Mouse, Rat

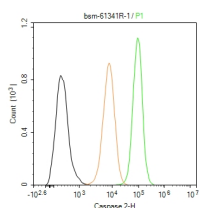
**Predicted**  
**MW.:** 51

**Subcellular**  
**Location:** Cytoplasm ,Nucleus

### — VALIDATION IMAGES —



25 ug total protein per lane of various lysates (see on figure) probed with Caspase 2 monoclonal antibody, unconjugated (bsm-61341R) at 1:1000 dilution and 4°C overnight incubation. Followed by conjugated secondary antibody incubation at r.t. for 60 min.



The HeLa (H) cells were fixed with 4% PFA (10 min at r.t.) and then permeabilized with 90% ice-cold methanol for 20 min at -20°C, the cells then were incubated in 5%BSA to block non-specific protein-protein interactions (30 min at r.t.), followed by secondary antibody incubation for 40 min at room temperature. Primary Antibody (green):Rabbit Anti-Caspase 2 antibody (bsm-61341R,1:100); Isotype Control (orange): Rabbit IgG (bs-0295P). Blank control (black): PBS. Acquisition of 20,000 events was performed.