

**bsm-61339R**

**[ Primary Antibody ]**

## **CDC42EP1 Recombinant Rabbit mAb**

**BioSS**  
ANTIBODIES

www.bioss.com.cn

sales@bioss.com.cn

techsupport@bioss.com.cn

400-901-9800

### **— DATASHEET —**

**Host:** Rabbit

**Isotype:** IgG

**Clonality:** Recombinant

**GeneID:** 11135

**SWISS:** Q00587

**Target:** CDC42EP1

**Immunogen:** A synthesized peptide derived from human CDC42EP1: 300-391.

**Purification:** affinity purified by Protein A

**Storage:** 10mM phosphate buffered saline(pH 7.4) with 150mM sodium chloride, 0.05% BSA, 0.02% Proclin300 and 50% glycerol.  
Store at 4°C for short term. Store at -20°C for long term. Avoid repeated freeze/thaw cycles.

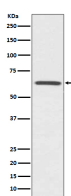
**Background:** Probably involved in the organization of the actin cytoskeleton.  
Induced membrane extensions in fibroblasts.

**Applications:** WB (1:1000-2000)

**Reactivity:** Human

**Predicted MW.:** 40

### **— VALIDATION IMAGES —**



Western blot analysis of HUVEC cell lysate. Using CDC42EP1 (bsm-61339R) monoclonal antibody at 1:1000 dilution and 4°C overnight incubation. Followed by conjugated secondary antibody incubation at r.t. for 60 min.