

**bsm-61337R****[ Primary Antibody ]****BioSS**  
**ANTIBODIES**

www.bioss.com.cn

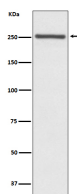
sales@bioss.com.cn

techsupport@bioss.com.cn

400-901-9800

**NOTCH4 Recombinant Rabbit mAb****— DATASHEET —**

<b>Host:</b> Rabbit	<b>Isotype:</b> IgG	<b>Applications:</b> <b>WB</b> (1:1000-2000) <b>Flow-Cyt</b> (1:50-100)
<b>Clonality:</b> Recombinant		<b>Reactivity:</b> Human, Mouse
<b>GeneID:</b> 4855	<b>SWISS:</b> Q99466	
<b>Target:</b> NOTCH4		
<b>Immunogen:</b> A synthesized peptide derived from human Notch 4: 1950-2003.		
<b>Purification:</b> affinity purified by Protein A		<b>Predicted MW.:</b> 210
<b>Storage:</b> 10mM phosphate buffered saline(pH 7.4) with 150mM sodium chloride, 0.05% BSA, 0.02% Proclin300 and 50% glycerol. Store at 4°C for short term. Store at -20°C for long term. Avoid repeated freeze/thaw cycles.		<b>Subcellular Location:</b> Cell membrane ,Nucleus
<b>Background:</b> Functions as a receptor for membrane-bound ligands Jagged1, Jagged2 and Delta1 to regulate cell-fate determination. Upon ligand activation through the released notch intracellular domain (NICD) it forms a transcriptional activator complex with RBPJ/RBPSUH and activates genes of the enhancer of split locus. Affects the implementation of differentiation, proliferation and apoptotic programs. May regulate branching morphogenesis in the developing vascular system.		

**— VALIDATION IMAGES —**

Western blot analysis of Mouse lung lysate.  
Using NOTCH4 (bsm-61337R) monoclonal antibody at 1:1000 dilution and 4°C overnight incubation. Followed by conjugated secondary antibody incubation at r.t. for 60 min.