

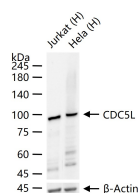
bsm-61335R**[Primary Antibody]****BioSS**
ANTIBODIES

www.bioss.com.cn

sales@bioss.com.cn

techsupport@bioss.com.cn

400-901-9800

CDC5L Recombinant Rabbit mAb**— DATASHEET —****Host:** Rabbit**Isotype:** IgG**Clonality:** Recombinant**CloneNo.:** 7H3**GeneID:** 988**SWISS:** Q99459**Target:** CDC5L**Immunogen:** A synthesized peptide derived from human CDC5L: 321-388.**Purification:** affinity purified by Protein A**Storage:** 10mM phosphate buffered saline(pH 7.4) with 150mM sodium chloride, 0.05% BSA, 0.02% Proclin300 and 50% glycerol. Store at 4°C for short term. Store at -20°C for long term. Avoid repeated freeze/thaw cycles.**Background:** DNA-binding protein involved in cell cycle control. May act as a transcription activator. Plays a role in pre-mRNA splicing as core component of precatalytic, catalytic and postcatalytic spliceosomal complexes.**Applications:** WB (1:500-2000)**IHC-P** (1:100-200)**IHC-F** (1:100-200)**IF** (1:50-200)**ICC/IF** (1:50-200)**Reactivity:** Human (predicted: Mouse, Rat)**Predicted
MW.:** 92**Subcellular
Location:** Nucleus**— VALIDATION IMAGES —**

25 ug total protein per lane of various lysates (see on figure) probed with CDC5L monoclonal antibody, unconjugated (bsm-61335R) at 1:1000 dilution and 4°C overnight incubation. Followed by conjugated secondary antibody incubation at r.t. for 60 min.