

**bsm-61327R****[ Primary Antibody ]****SIRT5 Recombinant Rabbit mAb****BioSS**  
**ANTIBODIES**

www.bioss.com.cn

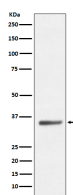
sales@bioss.com.cn

techsupport@bioss.com.cn

400-901-9800

**— DATASHEET —**

<b>Host:</b> Rabbit	<b>Isotype:</b> IgG	<b>Applications:</b> WB (1:1000-2000)
<b>Clonality:</b> Recombinant		<b>Reactivity:</b> Human, Mouse
<b>GeneID:</b> 23408	<b>SWISS:</b> Q9NXA8	
<b>Target:</b> SIRT5		
<b>Immunogen:</b> A synthesized peptide derived from human SIRT5: 1-74.		<b>Predicted MW.:</b> 34
<b>Purification:</b> affinity purified by Protein A		<b>Subcellular Location:</b> Cell membrane ,Cytoplasm
<b>Storage:</b> 10mM phosphate buffered saline(pH 7.4) with 150mM sodium chloride, 0.05% BSA, 0.02% Proclin300 and 50% glycerol. Store at 4°C for short term. Store at -20°C for long term. Avoid repeated freeze/thaw cycles.		
<b>Background:</b> NAD-dependent lysine demalonylase, desuccinylase and deglutarylase that specifically removes malonyl, succinyl and glutaryl groups on target proteins.Activates CPS1 and contributes to the regulation of blood ammonia levels during prolonged fasting: acts by mediating desuccinylation and deglutarylation of CPS1, thereby increasing CPS1 activity in response to elevated NAD levels during fasting.		

**— VALIDATION IMAGES —**

Western blot analysis of HeLa cell lysate. Using SIRT5 (bsm-61327R) monoclonal antibody at 1:1000 dilution and 4°C overnight incubation. Followed by conjugated secondary antibody incubation at r.t. for 60 min.