

bsm-61325R**[Primary Antibody]**

Stromal interaction molecule 1 Recombinant Rabbit mAb

Bioss
ANTIBODIES

www.bioss.com.cn

sales@bioss.com.cn

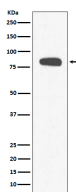
techsupport@bioss.com.cn

400-901-9800

— DATASHEET —

Host: Rabbit	Isotype: IgG	Applications: WB (1:1000-2000) IHC-P (1:100-200) IHC-F (1:100-200) IF (1:100-200) IP (1:20-50) Reactivity: Human, Mouse, Rat Predicted MW.: 77 Subcellular Location: Cell membrane ,Cytoplasm
Clonality: Recombinant		
GeneID: 6786	SWISS: Q13586	
Target: STIM1		
Immunogen: A synthesized peptide derived from human Stromal interaction molecule 1: 601-685.		
Purification: affinity purified by Protein A		
Storage: 10mM phosphate buffered saline(pH 7.4) with 150mM sodium chloride, 0.05% BSA, 0.02% Proclin300 and 50% glycerol. Store at 4°C for short term. Store at -20°C for long term. Avoid repeated freeze/thaw cycles.		
Background: STIM1 is a potential tumor suppressor; defects in STIM1 may cause rhabdomyosarcoma and rhabdoid tumors. STIM1 can either homodimerize or form heterodimers with STIM2. STIM2 possesses a high sequence identity to STIM1 and can function as an inhibitor of STIM1-mediated plasma membrane store-operated Ca ²⁺ entry. However, further investigation is required to elucidate the true physiological function of STIM2.		

— VALIDATION IMAGES —



Western blot analysis of HeLa cell lysate. Using STIM1 (bsm-61325R) monoclonal antibody at 1:1000 dilution and 4°C overnight incubation. Followed by conjugated secondary antibody incubation at r.t. for 60 min.