

bsm-61323R**[Primary Antibody]**

Calpain small subunit 1 Recombinant Rabbit mAb

BioSS
ANTIBODIES

www.bioss.com.cn

sales@bioss.com.cn

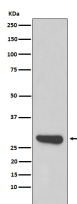
techsupport@bioss.com.cn

400-901-9800

— DATASHEET —

Host: Rabbit	Isotype: IgG	Applications: WB (1:500-2000) IHC-P (1:50-200) IHC-F (1:50-200) IF (1:50-200) Flow-Cyt (1:50-100) ICC/IF (1:50-200) Reactivity: Human, Mouse, Rat Predicted MW.: 28
Clonality: Recombinant		
GeneID: 826	SWISS: P04632	
Target: Calpain small subunit 1		
Immunogen: A synthesized peptide derived from human Calpain small subunit 1: 50-100/268.		
Purification: affinity purified by Protein A		
Storage: 10mM phosphate buffered saline(pH 7.4) with 150mM sodium chloride, 0.05% BSA, 0.02% Proclin300 and 50% glycerol. Store at 4°C for short term. Store at -20°C for long term. Avoid repeated freeze/thaw cycles.		
Background: Regulatory subunit of the calcium-regulated non-lysosomal thiol-protease which catalyzes limited proteolysis of substrates involved in cytoskeletal remodeling and signal transduction. Essential for embryonic development.		

— VALIDATION IMAGES —



Western blot analysis of 293T cell lysate. Using Calpain small subunit 1 (bsm-61323R) monoclonal antibody at 1:1000 dilution and 4°C overnight incubation. Followed by conjugated secondary antibody incubation at r.t. for 60 min.