

bsm-61319R**[Primary Antibody]****phospho-CaMK2 alpha (T286) Recombinant Rabbit mAb****BioSS**
ANTIBODIES

www.bioss.com.cn

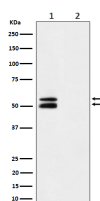
sales@bioss.com.cn

techsupport@bioss.com.cn

400-901-9800

— DATASHEET —

Host: Rabbit	Isotype: IgG	Applications: WB (1:500-2000) IHC-P (1:50-200) IHC-F (1:50-200) IF (1:50-200) Reactivity: Mouse, Rat Predicted MW.: 54 Subcellular Location: Cell membrane
Clonality: Recombinant		
GeneID: 108058	SWISS: P11798	
Target: CaMK2 alpha (T286)		
Immunogen: A synthesized peptide derived from mouse CaMKII alpha around the phosphorylation site of T286: RQE-pT-VDS.		
Purification: affinity purified by Protein A		
Storage: 10mM phosphate buffered saline(pH 7.4) with 150mM sodium chloride, 0.05% BSA, 0.02% Proclin300 and 50% glycerol. Store at 4°C for short term. Store at -20°C for long term. Avoid repeated freeze/thaw cycles.		
Background: Calcium/calmodulin-dependent protein kinase that functions autonomously after Ca ²⁺ /calmodulin-binding and autophosphorylation, and is involved in various processes, such as synaptic plasticity, neurotransmitter release and long-term potentiation.		

— VALIDATION IMAGES —

Western blot analysis of Mouse brain treated with Lambda phosphatase cell lysate. Using phospho-CaMK2 alpha (T286) (bsm-61319R) monoclonal antibody at 1:1000 dilution and 4°C overnight incubation. Followed by conjugated secondary antibody incubation at r.t. for 60 min.