

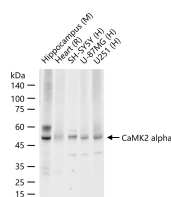
bsm-61318R**[Primary Antibody]****CaMK2 alpha Recombinant Rabbit mAb****Bioss**
ANTIBODIES

www.bioss.com.cn

sales@bioss.com.cn

techsupport@bioss.com.cn

400-901-9800

— DATASHEET —**Host:** Rabbit**Isotype:** IgG**Clonality:** Recombinant**CloneNo.:** 5D17**GeneID:** 815**SWISS:** Q13554**Target:** CaMK2 alpha**Immunogen:** A synthesized peptide derived from human CaMKII alpha: 34-84.**Purification:** affinity purified by Protein A**Storage:** 10mM phosphate buffered saline(pH 7.4) with 150mM sodium chloride, 0.05% BSA, 0.02% Proclin300 and 50% glycerol. Store at 4°C for short term. Store at -20°C for long term. Avoid repeated freeze/thaw cycles.**Background:** Calcium/calmodulin-dependent protein kinase that functions autonomously after Ca²⁺/calmodulin-binding and autophosphorylation, and is involved in various processes, such as synaptic plasticity, neurotransmitter release and long-term potentiation. Member of the NMDAR signaling complex in excitatory synapses, it regulates NMDAR-dependent potentiation of the AMPAR and therefore excitatory synaptic transmission.**Applications:** WB (1:500-2000)**Flow-Cyt** (1:50-100)**IP** (1:20-50)**Reactivity:** Human, Mouse, Rat**Predicted
MW.:** 54**Subcellular
Location:** Cell membrane**— VALIDATION IMAGES —**

25 ug total protein per lane of various lysates (see on figure) probed with CaMK2 alpha monoclonal antibody, unconjugated (bsm-61318R) at 1:1000 dilution and 4°C overnight incubation. Followed by conjugated secondary antibody incubation at r.t. for 60 min.