

bsm-61317R**[Primary Antibody]****Complement C4 / C4a Recombinant Rabbit mAb****Bioss**
ANTIBODIES

www.bioss.com.cn

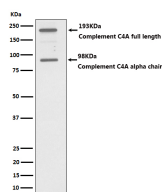
sales@bioss.com.cn

techsupport@bioss.com.cn

400-901-9800

— DATASHEET —

Host: Rabbit	Isotype: IgG	Applications: WB (1:500-2000) IHC-P (1:50-200) IHC-F (1:50-200) IF (1:50-200) Flow-Cyt (1:50-100) Reactivity: Human Predicted MW.: 193 Subcellular Location: Secreted
Clonality: Recombinant		
GeneID: 100293534	SWISS: P0C0L4	
Target: Complement C4 / C4a		
Immunogen: A synthesized peptide derived from human Complement C4 A: 940-1237.		
Purification: affinity purified by Protein A		
Storage: 10mM phosphate buffered saline(pH 7.4) with 150mM sodium chloride, 0.05% BSA, 0.02% Proclin300 and 50% glycerol. Store at 4°C for short term. Store at -20°C for long term. Avoid repeated freeze/thaw cycles.		
Background: Non-enzymatic component of C3 and C5 convertases and thus essential for the propagation of the classical complement pathway. Covalently binds to immunoglobulins and immune complexes and enhances the solubilization of immune aggregates and the clearance of IC through CR1 on erythrocytes.		

— VALIDATION IMAGES —

Western blot analysis of HepG2 cell lysate. Using Complement C4 / C4a (bsm-61317R) monoclonal antibody at 1:1000 dilution and 4°C overnight incubation. Followed by conjugated secondary antibody incubation at r.t. for 60 min.