

bsm-61316R**[Primary Antibody]**

GLUT2 Recombinant Rabbit mAb

BioSS
ANTIBODIES

www.bioss.com.cn

sales@bioss.com.cn

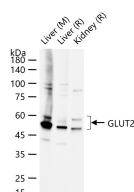
techsupport@bioss.com.cn

400-901-9800

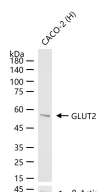
— DATASHEET —

Host: Rabbit**Isotype:** IgG**Clonality:** Recombinant**CloneNo.:** 17F17**GeneID:** 6514**SWISS:** P11168**Target:** GLUT2**Immunogen:** A synthesized peptide derived from human GLUT2: 38-83.**Purification:** affinity purified by Protein A**Storage:** 10mM phosphate buffered saline(pH 7.4) with 150mM sodium chloride, 0.05% BSA, 0.02% Proclin300 and 50% glycerol. Store at 4°C for short term. Store at -20°C for long term. Avoid repeated freeze/thaw cycles.**Background:** Facilitative hexose transporter that mediates the transport of glucose, fructose and galactose. Likely mediates the bidirectional transfer of glucose across the plasma membrane of hepatocytes and is responsible for uptake of glucose by the beta cells; may comprise part of the glucose-sensing mechanism of the beta cell.**Applications:** WB (1:500-2000)**Reactivity:** Human, Mouse, Rat**Predicted
MW.:** 57**Subcellular
Location:** Cell membrane

— VALIDATION IMAGES —



25 ug total protein per lane of various lysates (see on figure) probed with GLUT2 monoclonal antibody, unconjugated (bsm-61316R) at 1:1000 dilution and 4°C overnight incubation. Followed by conjugated secondary antibody incubation at r.t. for 60 min.



25 ug total protein per lane of various lysates (see on figure) probed with GLUT2 monoclonal antibody, unconjugated (bsm-61316R) at 1:2000 dilution and 4°C overnight incubation. Followed by conjugated secondary antibody incubation at r.t. for 60 min.