

bsm-61314R**[Primary Antibody]****BioSS**
ANTIBODIES

www.bioss.com.cn

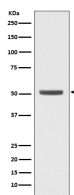
sales@bioss.com.cn

techsupport@bioss.com.cn

400-901-9800

E2F2 Recombinant Rabbit mAb**— DATASHEET —**

Host: Rabbit	Isotype: IgG	Applications: WB (1:1000-2000) Flow-Cyt (1:20-100)
Clonality: Recombinant		Reactivity: Human, Mouse, Rat
GeneID: 1870	SWISS: Q14209	
Target: E2F2		
Immunogen: A synthesized peptide derived from human E2F2: 313-375.		
Purification: affinity purified by Protein A		
Storage: 10mM phosphate buffered saline(pH 7.4) with 150mM sodium chloride, 0.05% BSA, 0.02% Proclin300 and 50% glycerol. Store at 4°C for short term. Store at -20°C for long term. Avoid repeated freeze/thaw cycles.		
Background: Play an important role in the negative regulation of cell proliferation. Functional inactivation of Rb can be mediated either through mutation or as a consequence of interaction with DNA tumor virus-encoded proteins. The DRTF1/E2F complex functions in the control of cell-cycle progression from G1 to S phase. E2F2 binds specifically to RB1 in a cell-cycle dependent manner.		
		Predicted MW.: 48
		Subcellular Location: Nucleus

— VALIDATION IMAGES —

Western blot analysis of K562 cell lysate. Using E2F2 (bsm-61314R) monoclonal antibody at 1:1000 dilution and 4°C overnight incubation. Followed by conjugated secondary antibody incubation at r.t. for 60 min.