

**bsm-61313R****[ Primary Antibody ]****Bioss**  
**ANTIBODIES**

www.bioss.com.cn

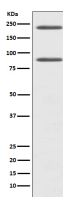
sales@bioss.com.cn

techsupport@bioss.com.cn

400-901-9800

**Complement C4 / C4a Recombinant Rabbit mAb****— DATASHEET —**

<b>Host:</b> Rabbit	<b>Isotype:</b> IgG	<b>Applications:</b> <b>WB</b> (1:500-2000) <b>ICC/IF</b> (1:50-200)
<b>Clonality:</b> Recombinant		
<b>GeneID:</b> 100293534	<b>SWISS:</b> P0C0L4	<b>Reactivity:</b> Human
<b>Target:</b> Complement C4 / C4a		
<b>Immunogen:</b> A synthesized peptide derived from human Complement C4 A: 1200-1280.		<b>Predicted MW.:</b> 193
<b>Purification:</b> affinity purified by Protein A		<b>Subcellular Location:</b> Secreted
<b>Storage:</b> 10mM phosphate buffered saline(pH 7.4) with 150mM sodium chloride, 0.05% BSA, 0.02% Proclin300 and 50% glycerol. Store at 4°C for short term. Store at -20°C for long term. Avoid repeated freeze/thaw cycles.		
<b>Background:</b> Non-enzymatic component of C3 and C5 convertases and thus essential for the propagation of the classical complement pathway. Covalently binds to immunoglobulins and immune complexes and enhances the solubilization of immune aggregates and the clearance of IC through CR1 on erythrocytes.		

**— VALIDATION IMAGES —**

Western blot analysis of HepG2 cell lysate. Using Complement C4 / C4a (bsm-61313R) monoclonal antibody at 1:1000 dilution and 4°C overnight incubation. Followed by conjugated secondary antibody incubation at r.t. for 60 min.