

bsm-61312R**[Primary Antibody]****GC1q R Recombinant Rabbit mAb****Bioss**
ANTIBODIES

www.bioss.com.cn

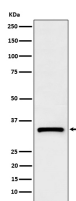
sales@bioss.com.cn

techsupport@bioss.com.cn

400-901-9800

— DATASHEET —

Host: Rabbit	Isotype: IgG	Applications: WB (1:500-2000) IHC-P (1:50-200) IHC-F (1:50-200) IF (1:50-200) Reactivity: Human, Mouse, Rat Predicted MW.: 31 Subcellular Location: Cytoplasm ,Nucleus
Clonality: Recombinant		
GeneID: 708	SWISS: Q07021	
Target: GC1q R		
Immunogen: A synthesized peptide derived from human Complement C1q binding protein: 200-250/282.		
Purification: affinity purified by Protein A		
Storage: 10mM phosphate buffered saline(pH 7.4) with 150mM sodium chloride, 0.05% BSA, 0.02% Proclin300 and 50% glycerol. Store at 4°C for short term. Store at -20°C for long term. Avoid repeated freeze/thaw cycles.		
Background: Binds to the globular "heads" of C1Q thus inhibiting C1 activation.		

— VALIDATION IMAGES —

Western blot analysis of HeLa cell lysate. Using GC1q R (bsm-61312R) monoclonal antibody at 1:1000 dilution and 4°C overnight incubation. Followed by conjugated secondary antibody incubation at r.t. for 60 min.