

bsm-61305R**[Primary Antibody]****Bioss**
ANTIBODIES

www.bioss.com.cn

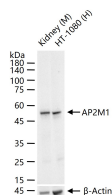
sales@bioss.com.cn

techsupport@bioss.com.cn

400-901-9800

AP2M1 Recombinant Rabbit mAb**— DATASHEET —**

Host: Rabbit	Isotype: IgG	Applications: WB (1:500-2000) Reactivity: Human, Mouse (predicted: Rat) Predicted MW.: 50 Subcellular Location: Cell membrane
Clonality: Recombinant	CloneNo.: 10G14	
GeneID: 1173	SWISS: Q96CW1	
Target: AP2M1		
Immunogen: A synthesized peptide derived from human AP 2 complex mu: 350-400.		
Purification: affinity purified by Protein A		
Storage: 10mM phosphate buffered saline(pH 7.4) with 150mM sodium chloride, 0.05% BSA, 0.02% Proclin300 and 50% glycerol. Store at 4°C for short term. Store at -20°C for long term. Avoid repeated freeze/thaw cycles.		
Background: Component of the adaptor protein complex 2 (AP-2).Adaptor protein complexes function in protein transport via transport vesicles in different membrane traffic pathways.		

— VALIDATION IMAGES —

25 ug total protein per lane of various lysates (see on figure) probed with AP2M1 monoclonal antibody, unconjugated (bsm-61305R) at 1:1000 dilution and 4°C overnight incubation. Followed by conjugated secondary antibody incubation at r.t. for 60 min.