

**bsm-61292R****[ Primary Antibody ]**

www.bioss.com.cn

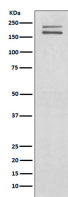
sales@bioss.com.cn

techsupport@bioss.com.cn

400-901-9800

**RET Recombinant Rabbit mAb****— DATASHEET —**

<b>Host:</b> Rabbit	<b>Isotype:</b> IgG	<b>Applications:</b> <b>WB</b> (1:500-2000) <b>IHC-P</b> (1:50-200) <b>IHC-F</b> (1:50-200) <b>IF</b> (1:50-200) <b>Flow-Cyt</b> (1:50-100) <b>ICC/IF</b> (1:50-200) <b>IP</b> (1:20-50)  <b>Reactivity:</b> Human, Mouse, Rat  <b>Predicted MW.:</b> 124  <b>Subcellular Location:</b> Secreted ,Cell membrane
<b>Clonality:</b> Recombinant		
<b>GeneID:</b> 5979	<b>SWISS:</b> P07949	
<b>Target:</b> RET		
<b>Immunogen:</b> A synthesized peptide derived from human RET: 1050-1114.		
<b>Purification:</b> affinity purified by Protein A		
<b>Storage:</b> 10mM phosphate buffered saline(pH 7.4) with 150mM sodium chloride, 0.05% BSA, 0.02% Proclin300 and 50% glycerol. Store at 4°C for short term. Store at -20°C for long term. Avoid repeated freeze/thaw cycles.		
<b>Background:</b> Receptor tyrosine-protein kinase involved in numerous cellular mechanisms including cell proliferation, neuronal navigation, cell migration, and cell differentiation in response to glia cell line-derived growth family factors (GDNF, NRTN, ARTN, PSPN and GDF15).		

**— VALIDATION IMAGES —**

Western blot analysis of SH-SY5Y cell lysate.  
Using RET (bsm-61292R) monoclonal antibody  
at 1:1000 dilution and 4°C overnight incubation.  
Followed by conjugated secondary antibody  
incubation at r.t. for 60 min.