

**bsm-61290R****[ Primary Antibody ]****Bioss**  
ANTIBODIES

www.bioss.com.cn

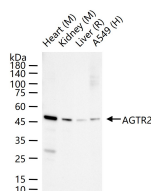
sales@bioss.com.cn

techsupport@bioss.com.cn

400-901-9800

**AGTR2 Recombinant Rabbit mAb****— DATASHEET —**

<b>Host:</b> Rabbit	<b>Isotype:</b> IgG	<b>Applications:</b> WB (1:500-2000) IP (1:20-50)  <b>Reactivity:</b> Human, Mouse, Rat   <b>Predicted MW.:</b> 41  <b>Subcellular Location:</b> Cell membrane
<b>Clonality:</b> Recombinant	<b>CloneNo.:</b> 4F6	
<b>GeneID:</b> 186	<b>SWISS:</b> P50052	
<b>Target:</b> AGTR2		
<b>Immunogen:</b> A synthesized peptide derived from human AGTR2: 318-363.		
<b>Purification:</b> affinity purified by Protein A		
<b>Storage:</b> 10mM phosphate buffered saline(pH 7.4) with 150mM sodium chloride, 0.05% BSA, 0.02% Proclin300 and 50% glycerol. Store at 4°C for short term. Store at -20°C for long term. Avoid repeated freeze/thaw cycles.		
<b>Background:</b> Receptor for angiotensin II. Cooperates with MTUS1 to inhibit ERK2 activation and cell proliferation.		

**— VALIDATION IMAGES —**

25 ug total protein per lane of various lysates (see on figure) probed with AGTR2 monoclonal antibody, unconjugated (bsm-61290R) at 1:2000 dilution and 4°C overnight incubation. Followed by conjugated secondary antibody incubation at r.t. for 60 min.