

bsm-61279R**[Primary Antibody]****BioSS**
ANTIBODIES

www.bioss.com.cn

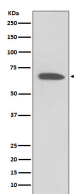
sales@bioss.com.cn

techsupport@bioss.com.cn

400-901-9800

Kv1.1 Recombinant Rabbit mAb**— DATASHEET —**

Host: Rabbit	Isotype: IgG	Applications: WB (1:1000-5000) IP (1:20-50)
Clonality: Recombinant		Reactivity: Human
GeneID: 3736	SWISS: Q09470	
Target: Kv1.1		
Immunogen: A synthesized peptide derived from human KCNA1: 400-450/495.		
Purification: affinity purified by Protein A		
Storage: 10mM phosphate buffered saline(pH 7.4) with 150mM sodium chloride, 0.05% BSA, 0.02% Proclin300 and 50% glycerol. Store at 4°C for short term. Store at -20°C for long term. Avoid repeated freeze/thaw cycles.		
Background: Voltage-gated potassium channel that mediates transmembrane potassium transport in excitable membranes, primarily in the brain and the central nervous system, but also in the kidney. Contributes to the regulation of the membrane potential and nerve signaling, and prevents neuronal hyperexcitability.		
		Predicted MW.: 56
		Subcellular Location: Cell membrane

— VALIDATION IMAGES —

Western blot analysis of Human fetal brain lysate. Using Kv1.1 (bsm-61279R) monoclonal antibody at 1:1000 dilution and 4°C overnight incubation. Followed by conjugated secondary antibody incubation at r.t. for 60 min.