

**bsm-61278R****[ Primary Antibody ]**

www.bioss.com.cn

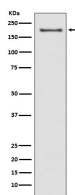
sales@bioss.com.cn

techsupport@bioss.com.cn

400-901-9800

**NSD3 Recombinant Rabbit mAb****— DATASHEET —**

<b>Host:</b> Rabbit	<b>Isotype:</b> IgG	<b>Applications:</b> <b>WB</b> (1:1000-2000) <b>Flow-Cyt</b> (1:50-100)
<b>Clonality:</b> Recombinant		<b>Reactivity:</b> Human, Mouse, Rat
<b>GeneID:</b> 54904	<b>SWISS:</b> Q9BZ95	
<b>Target:</b> NSD3		
<b>Immunogen:</b> A synthesized peptide derived from human NSD3: 1-59/1437.		
<b>Purification:</b> affinity purified by Protein A		<b>Predicted MW.:</b> 162
<b>Storage:</b> 10mM phosphate buffered saline(pH 7.4) with 150mM sodium chloride, 0.05% BSA, 0.02% Proclin300 and 50% glycerol. Store at 4°C for short term. Store at -20°C for long term. Avoid repeated freeze/thaw cycles.		<b>Subcellular Location:</b> Nucleus
<b>Background:</b> Histone methyltransferase. Preferentially dimethylates 'Lys-4' and 'Lys-27' of histone H3 forming H3K2me2 and H3K27me2. H3 'Lys-4' methylation represents a specific tag for epigenetic transcriptional activation, while 'Lys-27' is a mark for transcriptional repression.		

**— VALIDATION IMAGES —**

Western blot analysis of MCF-7 cell lysate. Using NSD3 (bsm-61278R) monoclonal antibody at 1:1000 dilution and 4°C overnight incubation. Followed by conjugated secondary antibody incubation at r.t. for 60 min.