

bsm-61276R**[Primary Antibody]****BioSS**
ANTIBODIES

www.bioss.com.cn

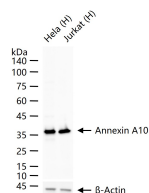
sales@bioss.com.cn

techsupport@bioss.com.cn

400-901-9800

Annexin A10 Recombinant Rabbit mAb**— DATASHEET —**

Host: Rabbit	Isotype: IgG	Applications: WB (1:500-2000)
Clonality: Recombinant		Reactivity: Human, Mouse, Rat
GeneID: 11199	SWISS: Q9UJ72	
Target: Annexin A10		
Immunogen: A synthesized peptide derived from human Annexin A10: 50-200/324.		Predicted MW.: 37
Purification: affinity purified by Protein A		Subcellular Location: Nucleus
Storage: 10mM phosphate buffered saline(pH 7.4) with 150mM sodium chloride, 0.05% BSA, 0.02% Proclin300 and 50% glycerol. Store at 4°C for short term. Store at -20°C for long term. Avoid repeated freeze/thaw cycles.		
Background: This gene encodes a member of the annexin family. Members of this calcium-dependent phospholipid-binding protein family play a role in the regulation of cellular growth and in signal transduction pathways. The function of this gene has not yet been determined.		

— VALIDATION IMAGES —

25 ug total protein per lane of various lysates
(see on figure) probed with Annexin A10
monoclonal antibody, unconjugated
(bsm-61276R) at 1:1000 dilution and 4°C
overnight incubation. Followed by conjugated
secondary antibody incubation at r.t. for 60 min.