

bsm-61272R**[Primary Antibody]****BioSS**
ANTIBODIES

www.bioss.com.cn

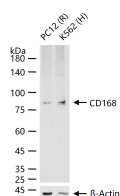
sales@bioss.com.cn

techsupport@bioss.com.cn

400-901-9800

CD168 Recombinant Rabbit mAb**— DATASHEET —**

Host: Rabbit	Isotype: IgG	Applications: WB (1:500-2000) IHC-P (1:100-200) IHC-F (1:100-200) IF (1:100-200) IP (1:20-50) Reactivity: Human, Rat (predicted: Mouse) Predicted MW.: 84 Subcellular Location: Extracellular matrix ,Cell membrane ,Cytoplasm
Clonality: Recombinant		
GeneID: 3161	SWISS: O75330	
Target: CD168		
Immunogen: A synthesized peptide derived from human CD168: 1-74.		
Purification: affinity purified by Protein A		
Storage: 10mM phosphate buffered saline(pH 7.4) with 150mM sodium chloride, 0.05% BSA, 0.02% Proclin300 and 50% glycerol. Store at 4°C for short term. Store at -20°C for long term. Avoid repeated freeze/thaw cycles.		
Background: Receptor for hyaluronic acid (HA).Involved in cell motilit.		

— VALIDATION IMAGES —

25 ug total protein per lane of various lysates (see on figure) probed with CD168 monoclonal antibody, unconjugated (bsm-61272R) at 1:1000 dilution and 4°C overnight incubation. Followed by conjugated secondary antibody incubation at r.t. for 60 min.