

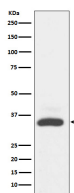
bsm-61271R**[Primary Antibody]****BioSS**
ANTIBODIES

www.bioss.com.cn

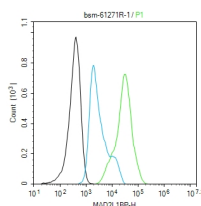
sales@bioss.com.cn

techsupport@bioss.com.cn

400-901-9800

MAD2L1BP Recombinant Rabbit mAb**— DATASHEET —****Host:** Rabbit**Isotype:** IgG**Clonality:** Recombinant**GeneID:** 9587**SWISS:** Q15013**Target:** MAD2L1BP**Immunogen:** A synthesized peptide derived from human MAD2L1BP: 200-250/274.**Purification:** affinity purified by Protein A**Storage:** 10mM phosphate buffered saline(pH 7.4) with 150mM sodium chloride, 0.05% BSA, 0.02% Proclin300 and 50% glycerol. Store at 4°C for short term. Store at -20°C for long term. Avoid repeated freeze/thaw cycles.**Background:** May function to silence the spindle checkpoint and allow mitosis to proceed through anaphase by binding MAD2L1 after it has become dissociated from the MAD2L1-CDC20 complex.**Applications:** **WB** (1:1000-2000)
IHC-P (1:100-200)
IHC-F (1:100-200)
IF (1:50-200)
Flow-Cyt (1:50-100)
ICC/IF (1:50-200)**Reactivity:** Human
(predicted: Mouse, Rat)**Predicted MW.:** 31**— VALIDATION IMAGES —**

Western blot analysis of A431 cell lysate. Using MAD2L1BP (bsm-61271R) monoclonal antibody at 1:1000 dilution and 4°C overnight incubation. Followed by conjugated secondary antibody incubation at r.t. for 60 min.



The HepG2 (H) cells were fixed with 4% PFA (10 min at r.t.) and then permeabilized with 90% ice-cold methanol for 20 min at -20°C, the cells then were incubated in 5% BSA to block non-specific protein-protein interactions (30 min at r.t.). Primary Antibody (green): Rabbit Anti-MAD2L1BP antibody (bsm-61271R, 1:100); Secondary Antibody (white blue): Goat anti-Rabbit IgG-BF488 (bs-60295G-BF488): 1 µg/test. Blank control (black): PBS. Acquisition of 20,000 events was performed.