

bs-20631R**[Primary Antibody]**

www.bioss.com.cn

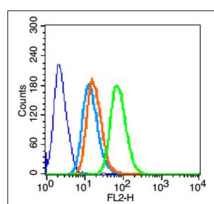
sales@bioss.com.cn

techsupport@bioss.com.cn

400-901-9800

Integrin beta 1/CD29 Rabbit pAb**— DATASHEET —**

<p>Host: Rabbit</p> <p>Clonality: Polyclonal</p> <p>GeneID: 3688</p> <p>Target: Integrin beta 1/CD29</p> <p>Immunogen: KLH conjugated synthetic peptide derived from human Integrin beta 1/CD29: 501-600/798. < Extracellular ></p> <p>Purification: affinity purified by Protein A</p> <p>Concentration: 1mg/ml</p> <p>Storage: 0.01M TBS (pH7.4) with 1% BSA, 0.02% Proclin300 and 50% Glycerol. Shipped at 4°C. Store at -20°C for one year. Avoid repeated freeze/thaw cycles.</p> <p>Background: Integrins alpha-1/beta-1, alpha-2/beta-1, alpha-10/beta-1 and alpha-11/beta-1 are receptors for collagen. Integrins alpha-1/beta-1 and alpha-2/beta-2 recognize the proline-hydroxylated sequence G-F-P-G-E-R in collagen. Integrins alpha-2/beta-1, alpha-3/beta-1, alpha-4/beta-1, alpha-5/beta-1, alpha-8/beta-1, alpha-10/beta-1, alpha-11/beta-1 and alpha-V/beta-1 are receptors for fibronectin. Alpha-4/beta-1 recognizes one or more domains within the alternatively spliced CS-1 and CS-5 regions of fibronectin. Integrin alpha-5/beta-1 is a receptor for fibrinogen. Integrin alpha-1/beta-1, alpha-2/beta-1, alpha-6/beta-1 and alpha-7/beta-1 are receptors for laminin. Integrin alpha-4/beta-1 is a receptor for VCAM1. It recognizes the sequence Q-I-D-S in VCAM1. Integrin alpha-9/beta-1 is a receptor for VCAM1, cytotactin and osteopontin. It recognizes the sequence A-E-I-D-G-I-E-L in cytotactin. Integrin alpha-3/beta-1 is a receptor for epiligrin, thrombospondin and CSPG4. Alpha-3/beta-1 may mediate with LGALS3 the stimulation by CSPG4 of endothelial cells migration. Integrin alpha-V/beta-1 is a receptor for vitronectin. Beta-1 integrins recognize the sequence R-G-D in a wide array of ligands. Isoform beta-1B interferes with isoform beta-1A resulting in a dominant negative effect on cell adhesion and migration (in vitro). In case of HIV-1 infection, the interaction with extracellular viral Tat protein seems to enhance angiogenesis in Kaposi's sarcoma lesions.</p>	<p>Applications: Flow-Cyt (1µg/Test)</p> <p>Reactivity: Human (predicted: Mouse, Rabbit, Pig, Sheep, Cow, Dog, Horse)</p> <p>Predicted MW.: 88 kDa</p> <p>Subcellular Location: Cell membrane ,Cytoplasm</p>
---	--

— VALIDATION IMAGES —

Blank control (blue line): Hela (fixed with 70% methanol (Overnight at 4°C) and then permeabilized with 90% ice-cold methanol for 20 min at -20°C). Primary Antibody (green line): Rabbit Anti-Integrin beta 1/CD29 antibody (bs-20631R), Dilution: 1µg /10⁶ cells; Isotype Control Antibody (orange line): Rabbit IgG . Secondary Antibody (white blue line): Goat anti-rabbit IgG-PE, Dilution: 1µg /test.

Important Note: This product as supplied is intended for research use only, not for use in human, therapeutic or diagnostic applications.

— SELECTED CITATIONS —

- **[IF=3.647]** Xiaohui Chen. et al. Bone marrow mesenchymal stem cell-derived extracellular vesicles containing miR-497-5p inhibit RSPO2 and accelerate OPLL. Life Sci. 2021 Apr;;119481 FCM ;Human. 33857573
- **[IF=3.926]** Jia Li. et al. TGF- β 1 stimulated mesenchymal stem cells-generated exosomal miR-29a promotes the proliferation, migration and fibrogenesis of tenocytes by targeting FABP3. CYTOKINE. 2023 Feb;162:156090 FCM ;Rat. 36481477
- **[IF=2.784]** Ma C et al.Isolation and biological characteristic evaluation of a novel type of cartilage stem/progenitor cell derived from Small-tailed Han sheep embryos.Int J Mol Med. 2018 Jul;42(1):525-533. ICC ;Sheep. 29693133
- **[IF=2.705]** Wang B et al. Laminin-dependent integrin β 1 signaling regulates milk protein synthesis via prolactin/STAT5 pathway in bovine mammary epithelial cells. Biochem Biophys Res Commun. 2020 Jan 24. WB ;Bovine. 31987497
- **[IF=2.4]** Huang Ying. et al. Knocking Down HN1 Blocks Helicobacter pylori-Induced Malignant Phenotypes in Gastric Mucosal Cells and Inhibits Gastric Cancer Cell Proliferation, Cytoskeleton Remodeling, and Migration. BIOCHEM GENET. 2024 Mar;;1-21 IF ;Human. 38526710