

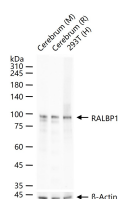
bsm-61265R**[Primary Antibody]****RALBP1 Recombinant Rabbit mAb****BioSS**
ANTIBODIES

www.bioss.com.cn

sales@bioss.com.cn

techsupport@bioss.com.cn

400-901-9800

— DATASHEET —**Host:** Rabbit**Isotype:** IgG**Clonality:** Recombinant**GeneID:** 10928**SWISS:** Q15311**Target:** RALBP1**Immunogen:** A synthesized peptide derived from human RalBP1: 200-265/655.**Purification:** affinity purified by Protein A**Storage:** 10mM phosphate buffered saline(pH 7.4) with 150mM sodium chloride, 0.05% BSA, 0.02% Proclin300 and 50% glycerol.
Store at 4°C for short term. Store at -20°C for long term. Avoid repeated freeze/thaw cycles.**Background:** Multifunctional protein that functions as a downstream effector of RALA and RALB. As a GTPase-activating protein/GAP can inactivate CDC42 and RAC1 by stimulating their GTPase activity. As part of the Ral signaling pathway, may also regulate ligand-dependent EGF and insulin receptors-mediated endocytosis.**Applications:** WB (1:500-2000)**IHC-P** (1:100-200)**IHC-F** (1:100-200)**IF** (1:100-200)**Flow-Cyt** (1:50-100)**Reactivity:** Human, Mouse, Rat**Predicted
MW.:** 76**Subcellular
Location:** Cytoplasm**— VALIDATION IMAGES —**

25 ug total protein per lane of various lysates (see on figure) probed with RALBP1 monoclonal antibody, unconjugated (bsm-61265R) at 1:1000 dilution and 4°C overnight incubation. Followed by conjugated secondary antibody incubation at r.t. for 60 min.