

bsm-61260R**[Primary Antibody]****Bioss**
ANTIBODIES

www.bioss.com.cn

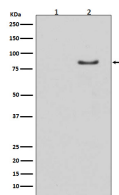
sales@bioss.com.cn

techsupport@bioss.com.cn

400-901-9800

phospho-HSL (Ser853) Recombinant Rabbit mAb**— DATASHEET —**

Host: Rabbit	Isotype: IgG	Applications: WB (1:1000-5000)
Clonality: Recombinant		Reactivity: Human, Mouse, Rat
GeneID: 3991	SWISS: Q05469	
Target: HSL (Ser853)		
Immunogen: A synthesized peptide derived from human Hormone sensitive lipase around the phosphorylation site of S853: RR-pS-VSE.		Predicted MW.: 117
Purification: affinity purified by Protein A		Subcellular Location: Cell membrane ,Cytoplasm
Storage: 10mM phosphate buffered saline(pH 7.4) with 150mM sodium chloride, 0.05% BSA, 0.02% Proclin300 and 50% glycerol. Store at 4°C for short term. Store at -20°C for long term. Avoid repeated freeze/thaw cycles.		
Background: Lipase with broad substrate specificity, catalyzing the hydrolysis of triacylglycerols (TAGs), diacylglycerols (DAGs), monoacylglycerols (MAGs), cholesteryl esters and retinyl esters.		

— VALIDATION IMAGES —

Western blot analysis of (1) Mouse muscle lysate;
(2) Mouse muscle lysate treated with AP. Using
Phospho-HSL (Ser853) (bsm-61260R)
monoclonal antibody at 1:1000 dilution and 4°C
overnight incubation. Followed by conjugated
secondary antibody incubation at r.t. for 60 min.