

**bsm-61259R****[ Primary Antibody ]**

www.bioss.com.cn

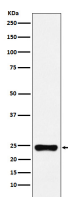
sales@bioss.com.cn

techsupport@bioss.com.cn

400-901-9800

**BAG2 Recombinant Rabbit mAb****— DATASHEET —**

<b>Host:</b> Rabbit	<b>Isotype:</b> IgG	<b>Applications:</b> <b>WB</b> (1:1000-2000) <b>ICC/IF</b> (1:50-200)
<b>Clonality:</b> Recombinant		<b>Reactivity:</b> Human, Mouse, Rat
<b>GeneID:</b> 9532	<b>SWISS:</b> O95816	
<b>Target:</b> BAG2		
<b>Immunogen:</b> A synthesized peptide derived from human BAG2: 150-211/211.		
<b>Purification:</b> affinity purified by Protein A		<b>Predicted MW.:</b> 24
<b>Storage:</b> 10mM phosphate buffered saline(pH 7.4) with 150mM sodium chloride, 0.05% BSA, 0.02% Proclin300 and 50% glycerol. Store at 4°C for short term. Store at -20°C for long term. Avoid repeated freeze/thaw cycles.		<b>Subcellular Location:</b> Cytoplasm
<b>Background:</b> Co-chaperone for HSP70 and HSC70 chaperone proteins. Acts as a nucleotide-exchange factor (NEF) promoting the release of ADP from the HSP70 and HSC70 proteins thereby triggering client/substrate protein release.		

**— VALIDATION IMAGES —**

Western blot analysis of HeLa cell lysate. Using BAG2 (bsm-61259R) monoclonal antibody at 1:1000 dilution and 4°C overnight incubation. Followed by conjugated secondary antibody incubation at r.t. for 60 min.