

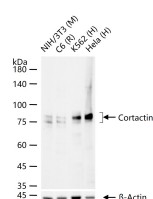
bsm-61251R**[Primary Antibody]****Bioss**
ANTIBODIES

www.bioss.com.cn

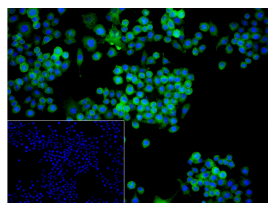
sales@bioss.com.cn

techsupport@bioss.com.cn

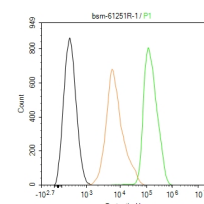
400-901-9800

Cortactin Recombinant Rabbit mAb**DATASHEET****Host:** Rabbit**Isotype:** IgG**Clonality:** Recombinant**GeneID:** 2017**SWISS:** Q14247**Target:** Cortactin**Immunogen:** A synthesized peptide derived from human Src substrate cortactin: 30-84/550.**Purification:** affinity purified by Protein A**Storage:** 10mM phosphate buffered saline(pH 7.4) with 150mM sodium chloride, 0.05% BSA, 0.02% Proclin300 and 50% glycerol. Store at 4°C for short term. Store at -20°C for long term. Avoid repeated freeze/thaw cycles.**Background:** Cortactin a cytoskeletal protein that that is involved in coordinating actin reorganization during cell movement. Localizes at the leading edge of lamellipodia during cell migration. Its amino-terminal acidic domain associates with the Arp2/3 and WASP complex at F-actin branches.**Applications:** WB (1:500-2000)**IHC-P** (1:50-200)**IHC-F** (1:50-200)**IF** (1:50-200)**Flow-Cyt** (1:50-100)**ICC/IF** (1:50-200)**IP** (1:20-50)**Reactivity:** Human, Mouse, Rat**Predicted
MW.:** 62**Subcellular
Location:** Cytoplasm**VALIDATION IMAGES**

25 ug total protein per lane of various lysates (see on figure) probed with Cortactin monoclonal antibody, unconjugated (bsm-61251R) at 1:1000 dilution and 4°C overnight incubation. Followed by conjugated secondary antibody incubation at r.t. for 60 min.



4% Paraformaldehyde-fixed HeLa (H) cell; Triton X-100 at r.t. for 20 min; Antibody incubation with (Cortactin) monoclonal Antibody, unconjugated (bsm-61251R) 1:100, 90 min at 37°C; followed by conjugated Goat Anti-Rabbit IgG antibody (green, bs-60295G-BF488) at 37°C for 90 min, DAPI (blue, C02-04002) was used to stain the cell nuclei. PBS instead of the primary antibody was used as the blank control.



The HeLa (H) cells were fixed with 4% PFA (10 min at r.t.) and then permeabilized with 90% ice-cold methanol for 20 min at -20°C, the cells then were incubated in 5% BSA to block non-specific protein-protein interactions (30 min at r.t.), followed by secondary antibody incubation for 40 min at room temperature. Primary Antibody (green): Rabbit Anti-Cortactin antibody (bsm-61251R, 1:100); Isotype Control (orange): Rabbit IgG (bs-0295P). Blank control (black): PBS. Acquisition of 20,000 events was performed.