

bsm-61247R**[Primary Antibody]****SERCA1 Recombinant Rabbit mAb****BioSS**
ANTIBODIES

www.bioss.com.cn

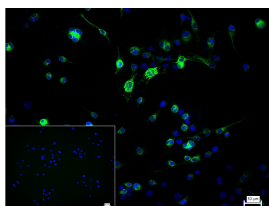
sales@bioss.com.cn

techsupport@bioss.com.cn

400-901-9800

— DATASHEET —

Host: Rabbit	Isotype: IgG	Applications: ICC/IF (1:50-200)
Clonality: Recombinant		Reactivity: Human (predicted: Mouse, Rat)
GeneID: 487	SWISS: O14983	
Target: SERCA1		Predicted MW.: 110
Immunogen: A synthesized peptide derived from human SERCA1: 970-1001.		Subcellular Location: Cell membrane ,Cytoplasm
Purification: affinity purified by Protein A		
Storage: 10mM phosphate buffered saline(pH 7.4) with 150mM sodium chloride, 0.05% BSA, 0.02% Proclin300 and 50% glycerol. Store at 4°C for short term. Store at -20°C for long term. Avoid repeated freeze/thaw cycles.		
Background: Key regulator of striated muscle performance by acting as the major Ca ²⁺ ATPase responsible for the reuptake of cytosolic Ca ²⁺ into the sarcoplasmic reticulum. Catalyzes the hydrolysis of ATP coupled with the translocation of calcium from the cytosol to the sarcoplasmic reticulum lumen. Contributes to calcium sequestration involved in muscular excitation/contraction.		

— VALIDATION IMAGES —

4% Paraformaldehyde-fixed RD (H) cell; Triton X-100 at r.t. for 20 min; Antibody incubation with (SERCA1) monoclonal Antibody, unconjugated (bsm-61247R) 1:100, 90 min at 37°C; followed by conjugated Goat Anti-Rabbit IgG antibody (green, bs-60295G-BF488) at 37°C for 90 min, DAPI (blue, C02-04002) was used to stain the cell nuclei. PBS instead of the primary antibody was used as the blank control.