

**bsm-61238R****[ Primary Antibody ]****BioSS**  
**ANTIBODIES**

www.bioss.com.cn

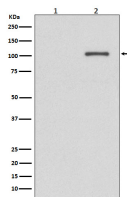
sales@bioss.com.cn

techsupport@bioss.com.cn

400-901-9800

**phospho-IRE1 (Ser724) Recombinant Rabbit mAb****— DATASHEET —**

<b>Host:</b> Rabbit	<b>Isotype:</b> IgG	<b>Applications:</b> WB (1:1000-2000)
<b>Clonality:</b> Recombinant		<b>Reactivity:</b> Human
<b>GeneID:</b> 10595	<b>SWISS:</b> O75460	
<b>Target:</b> IRE1 (Ser724)		
<b>Immunogen:</b> A synthesized peptide derived from human IRE1 alpha around the phosphorylation site of S724: GRH-pS-FSR.		<b>Predicted MW.:</b> 110
<b>Purification:</b> affinity purified by Protein A		<b>Subcellular Location:</b> Cell membrane ,Cytoplasm
<b>Storage:</b> 10mM phosphate buffered saline(pH 7.4) with 150mM sodium chloride, 0.05% BSA, 0.02% Proclin300 and 50% glycerol. Store at 4°C for short term. Store at -20°C for long term. Avoid repeated freeze/thaw cycles.		
<b>Background:</b> Serine/threonine-protein kinase and endoribonuclease that acts as a key sensor for the endoplasmic reticulum unfolded protein response (UPR).		

**— VALIDATION IMAGES —**

Western blot analysis of (1) K562 cell lysate treated with AP; (2) Untreated K562 cell lysate. Using Phospho-IRE1 (Ser724) (bsm-61238R) monoclonal antibody at 1:1000 dilution and 4°C overnight incubation. Followed by conjugated secondary antibody incubation at r.t. for 60 min.