

bs-20622R**[Primary Antibody]****Bioss**
ANTIBODIES

www.bioss.com.cn

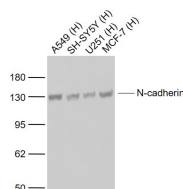
sales@bioss.com.cn

techsupport@bioss.com.cn

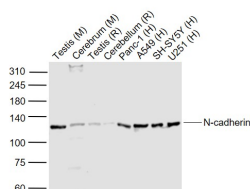
400-901-9800

N-cadherin Rabbit pAb**DATASHEET**

| | | |
|---|----------------------|---|
| Host: Rabbit | Isotype: IgG | Applications: WB (1:500-2000) |
| Clonality: Polyclonal | | Reactivity: Human, Mouse, Rat (predicted: Rabbit, Pig, Sheep, Cow, Horse) |
| GeneID: 1000 | SWISS: P19022 | Predicted MW.: 100 kDa |
| Target: N-cadherin | | Subcellular Location: Cell membrane |
| Immunogen: KLH conjugated synthetic peptide derived from human N-cadherin: 701-800/906. | | |
| Purification: affinity purified by Protein A | | |
| Concentration: 1mg/ml | | |
| Storage: 0.01M TBS (pH7.4) with 1% BSA, 0.02% Proclin300 and 50% Glycerol. Shipped at 4°C. Store at -20°C for one year. Avoid repeated freeze/thaw cycles. | | |
| Background: This gene is a classical cadherin from the cadherin superfamily. The encoded protein is a calcium dependent cell-cell adhesion glycoprotein comprised of five extracellular cadherin repeats, a transmembrane region and a highly conserved cytoplasmic tail. The protein functions during gastrulation and is required for establishment of left-right asymmetry. At certain central nervous system synapses, presynaptic to postsynaptic adhesion is mediated at least in part by this gene product. | | |

VALIDATION IMAGES

Sample: Lane 1: A549 (Human) Cell Lysate at 30 ug
Lane 2: SH-SY5Y (Human) Cell Lysate at 30 ug
Lane 3: U251 (Human) Cell Lysate at 30 ug
Lane 4: MCF-7 (Human) Cell Lysate at 30 ug
Primary: Anti-N-cadherin (bs-20622R) at 1/1000 dilution
Secondary: IRDye800CW Goat Anti-Rabbit IgG at 1/20000 dilution
Predicted band size: 130 kD
Observed band size: 130 kD



Sample: Lane 1: Testis (Mouse) Lysate at 40 ug
Lane 2: Cerebrum (Mouse) Lysate at 40 ug
Lane 3: Testis (Rat) Lysate at 40 ug
Lane 4: Cerebellum (Rat) Lysate at 40 ug
Lane 5: Panc-1 (Human) Cell Lysate at 30 ug
Lane 6: A549 (Human) Cell Lysate at 30 ug
Lane 7: SH-SY5Y (Human) Cell Lysate at 30 ug
Lane 8: U251 (Human) Cell Lysate at 30 ug
Primary: Anti-N-cadherin (bs-20622R) at 1/1000 dilution
Secondary: IRDye800CW Goat Anti-Rabbit IgG at 1/20000 dilution
Predicted band size: 130 kD
Observed band size: 130 kD

SELECTED CITATIONS

- **[IF=2.8]** Yue Deng, et al. ARID5B promoted the histone demethylation of SORBS2 and hampered the metastasis of ovarian cancer. PATHOL RES PRACT. 2023 Dec;252:154911 WB,IHC ;Mouse,Human. 37948999
- **[IF=1.977]** Qin hong Xu, et al. Overexpression of circ_0001445 decelerates hepatocellular carcinoma progression by regulating miR-942-5p/ALX4 axis. Biotechnol Lett. 2020 Dec;42(12):2735-2747 WB ;Humann. 32856218