

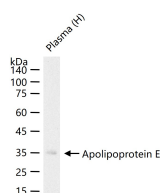
bsm-61226R**[Primary Antibody]****Apolipoprotein E Recombinant Rabbit mAb****Bioss**
ANTIBODIES

www.bioss.com.cn

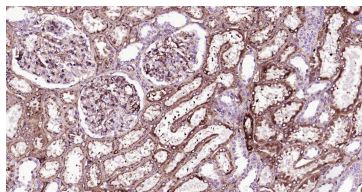
sales@bioss.com.cn

techsupport@bioss.com.cn

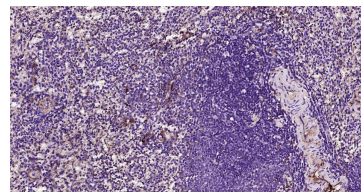
400-901-9800

— DATASHEET —**Host:** Rabbit**Isotype:** IgG**Clonality:** Recombinant**CloneNo.:** 9E10**GeneID:** 348**SWISS:** P02649**Target:** Apolipoprotein E**Immunogen:** A synthesized peptide derived from human Apolipoprotein E: 300-317.**Purification:** affinity purified by Protein A**Storage:** 10mM phosphate buffered saline(pH 7.4) with 150mM sodium chloride, 0.05% BSA, 0.02% Proclin300 and 50% glycerol. Store at 4°C for short term. Store at -20°C for long term. Avoid repeated freeze/thaw cycles.**Background:** APOE is an apolipoprotein, a protein associating with lipid particles, that mainly functions in lipoprotein-mediated lipid transport between organs via the plasma and interstitial fluids. APOE is a core component of plasma lipoproteins and is involved in their production, conversion and clearance.**Applications:** WB (1:500-2000)
IHC-P (1:100-500)
IHC-F (1:100-500)
IF (1:100-500)
ICC/IF (1:50-200)
IP (1:20-50)**Reactivity:** Human**Predicted
MW.:** 36**Subcellular
Location:** Secreted**— VALIDATION IMAGES —**

25 ug total protein per lane of various lysates (see on figure) probed with Apolipoprotein E monoclonal antibody, unconjugated (bsm-61226R) at 1:2000 dilution and 4°C overnight incubation. Followed by conjugated secondary antibody incubation at r.t. for 60 min.



Paraformaldehyde-fixed, paraffin embedded Human kidney;Antigen retrieval by boiling in sodium citrate buffer (pH6.0) for 15 min; Antibody incubation with Apolipoprotein E Monoclonal Antibody, Unconjugated (bsm-61226R) at 1:200 overnight at 4°C, followed by conjugation to the bs-0295G-HRP and DAB (C-0010) staining.



Paraformaldehyde-fixed, paraffin embedded Human spleen;Antigen retrieval by boiling in sodium citrate buffer (pH6.0) for 15 min; Antibody incubation with Apolipoprotein E Monoclonal Antibody, Unconjugated (bsm-61226R) at 1:200 overnight at 4°C, followed by conjugation to the bs-0295G-HRP and DAB (C-0010) staining.