

**bsm-61224R****[ Primary Antibody ]****Lamin B Receptor Recombinant Rabbit mAb****BioSS**  
**ANTIBODIES**

www.bioss.com.cn

sales@bioss.com.cn

techsupport@bioss.com.cn

400-901-9800

**— DATASHEET —**

**Host:** Rabbit

**Clonality:** Recombinant

**GeneID:** 3930

**Target:** Lamin B Receptor

**Immunogen:** A synthesized peptide derived from human Lamin B Receptor: 300-615/615.

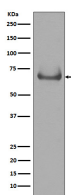
**Purification:** affinity purified by Protein A

**Storage:** 10mM phosphate buffered saline(pH 7.4) with 150mM sodium chloride, 0.05% BSA, 0.02% Proclin300 and 50% glycerol. Store at 4°C for short term. Store at -20°C for long term. Avoid repeated freeze/thaw cycles.

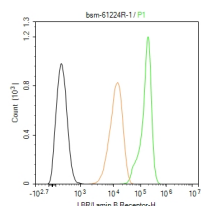
**Background:** Plays a critical role in myeloid cell cholesterol biosynthesis which is essential to both myeloid cell growth and functional maturation .Mediates the activation of NADPH oxidases, perhaps by maintaining critical levels of cholesterol required for membrane lipid raft formation during neutrophil differentiation. Anchors the lamina and the heterochromatin to the inner nuclear membrane.

**Isotype:** IgG**SWISS:** Q14739

**Applications:** WB (1:1000-2000)  
**IHC-P** (1:100-200)  
**IHC-F** (1:100-200)  
**IF** (1:50-200)  
**Flow-Cyt** (1:50-100)  
**ICC/IF** (1:50-200)  
**IP** (1:20-50)

**Reactivity:** Human (predicted: Rat)**Predicted**  
**MW.:** 71**Subcellular** Cell membrane ,Cytoplasm  
**Location:** ,Nucleus**— VALIDATION IMAGES —**

Western blot analysis of Jurkat cell lysate. Using Lamin B Receptor (bsm-61224R) monoclonal antibody at 1:1000 dilution and 4°C overnight incubation. Followed by conjugated secondary antibody incubation at r.t. for 60 min.



The HeLa (H) cells were fixed with 4% PFA (10 min at r.t.) and then permeabilized with 90% ice-cold methanol for 20 min at -20°C, the cells then were incubated in 5% BSA to block non-specific protein-protein interactions (30 min at r.t.), followed by secondary antibody incubation for 40 min at room temperature. Primary Antibody (green): Rabbit Anti-LBR/Lamin B Receptor antibody (bsm-61224R, 1:100); Isotype Control (orange): Rabbit IgG (bs-0295P). Blank control (black): PBS. Acquisition of 20,000 events was performed.