

bsm-61222R**[Primary Antibody]****Bioss**
ANTIBODIES

www.bioss.com.cn

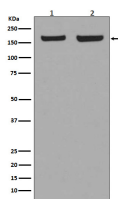
sales@bioss.com.cn

techsupport@bioss.com.cn

400-901-9800

EEA1 Recombinant Rabbit mAb**— DATASHEET —**

Host: Rabbit	Isotype: IgG	Applications: WB (1:500-2000) ICC/IF (1:50-200)
Clonality: Recombinant		Reactivity: Human, Mouse, Rat
GeneID: 8411	SWISS: Q15075	
Target: EEA1		
Immunogen: A synthesized peptide derived from human Early endosome antigen 1: 1-63/1411.		Predicted MW.: 162
Purification: affinity purified by Protein A		Subcellular Location: Cell membrane ,Cytoplasm
Storage: 10mM phosphate buffered saline(pH 7.4) with 150mM sodium chloride, 0.05% BSA, 0.02% Proclin300 and 50% glycerol. Store at 4°C for short term. Store at -20°C for long term. Avoid repeated freeze/thaw cycles.		
Background: Binds phospholipid vesicles containing phosphatidylinositol 3-phosphate and participates in endosomal trafficking.		

— VALIDATION IMAGES —

Western blot analysis of (1) HeLa cell lysate; (2) NIH/3T3 cell lysate. Using EEA1 (bsm-61222R) monoclonal antibody at 1:1000 dilution and 4°C overnight incubation. Followed by conjugated secondary antibody incubation at r.t. for 60 min.