

**bs-20623R****[ Primary Antibody ]****N-cadherin Rabbit pAb****Bioss**  
**ANTIBODIES**

www.bioss.com.cn

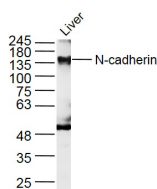
sales@bioss.com.cn

techsupport@bioss.com.cn

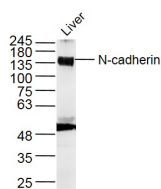
400-901-9800

**DATASHEET**

|   |   |  |
|---|---|--|
| <b>Host:</b> Rabbit<br><b>Clonality:</b> Polyclonal<br><b>GeneID:</b> 1000<br><b>Target:</b> N-cadherin<br><b>Immunogen:</b> KLH conjugated synthetic peptide derived from human N-cadherin: 501-600/906.<br><b>Purification:</b> affinity purified by Protein A<br><b>Concentration:</b> 1mg/ml<br><b>Storage:</b> 0.01M TBS (pH7.4) with 1% BSA, 0.02% Proclin300 and 50% Glycerol.<br>Shipped at 4°C. Store at -20°C for one year. Avoid repeated freeze/thaw cycles.<br><b>Background:</b> This gene is a classical cadherin from the cadherin superfamily. The encoded protein is a calcium dependent cell-cell adhesion glycoprotein comprised of five extracellular cadherin repeats, a transmembrane region and a highly conserved cytoplasmic tail. The protein functions during gastrulation and is required for establishment of left-right asymmetry. At certain central nervous system synapses, presynaptic to postsynaptic adhesion is mediated at least in part by this gene product. | <b>Isotype:</b> IgG<br><b>SWISS:</b> P19022 | <b>Applications:</b> WB (1:500-2000)<br><b>Reactivity:</b> Human, Mouse, Rat<br>(predicted: Rabbit, Pig, Sheep, Cow, Horse)<br><b>Predicted MW.:</b> 100 kDa<br><b>Subcellular Location:</b> Cell membrane |
|---|---|--|

**VALIDATION IMAGES**

Sample: Liver (Rat) Lysate at 40 ug Primary: Anti-N-cadherin (bs-20623R) at 1/300 dilution  
Secondary: IRDye800CW Goat Anti-Rabbit IgG at 1/20000 dilution Predicted band size: 100 kD  
Observed band size: 140 kD



Sample: Liver (Mouse) Lysate at 40 ug Primary: Anti-N-cadherin (bs-20623R) at 1/300 dilution  
Secondary: IRDye800CW Goat Anti-Rabbit IgG at 1/20000 dilution Predicted band size: 100 kD  
Observed band size: 140 kD

**SELECTED CITATIONS**

- **[IF=7.2]** Han A. Xuan. et al. Machine learning framework develops neutrophil extracellular traps model for clinical outcome and immunotherapy response in lung adenocarcinoma. APOPTOSIS. 2024 Mar;;1-19 IHC ;Mouse. 38519636
- **[IF=6.244]** Pei Dai. et al. Gimap5 Inhibits Lung Cancer Growth by Interacting With M6PR. Front Oncol. 2021; 11: 699847 WB ;Human. 34604035
- **[IF=4.5]** Ying Sun. et al. Cinobufagin inhibits M2-like tumor-associated macrophage polarization to attenuate the invasion and migration of lung cancer cells. INT J ONCOL. 2024 Nov;65(5):1-17 WB ;Human. 39301639
- **[IF=3.585]** Zhao H et al. miR-181b-5p inhibits endothelial-mesenchymal transition in monocrotaline-induced pulmonary arterial hypertension by targeting endocan and TGFBR1. Toxicol Appl Pharmacol. 2019 Nov 14;386:114827. WB ;Rat. 31734320
- **[IF=4.175]** Junmin Li. et al. Circ\_ZFR contributes to the paclitaxel resistance and progression of non-small cell lung cancer by upregulating KPNA4 through sponging miR-195-5p. Cancer Cell Int. 2021 Dec;21(1):1-15 WB ;Human.

Important Note: This product as supplied is intended for research use only, not for use in human, therapeutic or diagnostic applications.

33407505