

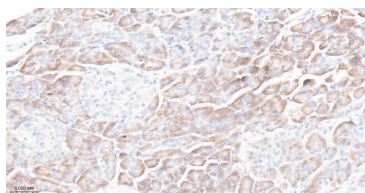
bsm-61209R**[Primary Antibody]****BioSS**
ANTIBODIES

www.bioss.com.cn

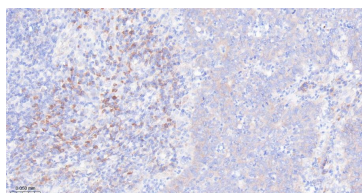
sales@bioss.com.cn

techsupport@bioss.com.cn

400-901-9800

RPS3 Recombinant Rabbit mAb**— DATASHEET —****Host:** Rabbit**Isotype:** IgG**Clonality:** Recombinant**CloneNo.:** 8C18**GeneID:** 6188**SWISS:** P23396**Target:** RPS3**Immunogen:** A synthesized peptide derived from human RPS3: 114-184.**Purification:** affinity purified by Protein A**Storage:** 10mM phosphate buffered saline(pH 7.4) with 150mM sodium chloride, 0.05% BSA, 0.02% Proclin300 and 50% glycerol. Store at 4°C for short term. Store at -20°C for long term. Avoid repeated freeze/thaw cycles.**Background:** Involved in translation as a component of the 40S small ribosomal subunit. Has endonuclease activity and plays a role in repair of damaged DNA. Cleaves phosphodiester bonds of DNAs containing altered bases with broad specificity and cleaves supercoiled DNA more efficiently than relaxed DNA. Displays high binding affinity for 7,8-dihydro-8-oxoguanine (8-oxoG), a common DNA lesion caused by reactive oxygen species (ROS). Has also been shown to bind with similar affinity to intact and damaged DNA.**Applications:** **IHC-P** (1:50-200)**IHC-F** (1:50-200)**IF** (1:50-200)**ICC/IF** (1:50-200)**Reactivity:** Human, Mouse, Rat**Predicted
MW.:** 27**Subcellular
Location:** Cytoplasm**— VALIDATION IMAGES —**

Paraformaldehyde-fixed, paraffin embedded Human Pancreas; Antigen retrieval by boiling in sodium citrate buffer (pH6.0) for 15 min; Antibody incubation with RPS3 Monoclonal Antibody, Unconjugated(bsm-61209R) at 1:100 overnight at 4°C, followed by conjugation to the bs-0295G-HRP and DAB (C-0010) staining.



Paraformaldehyde-fixed, paraffin embedded Human Colon Cancer; Antigen retrieval by boiling in sodium citrate buffer (pH6.0) for 15 min; Antibody incubation with RPS3 Monoclonal Antibody, Unconjugated(bsm-61209R) at 1:100 overnight at 4°C, followed by conjugation to the bs-0295G-HRP and DAB (C-0010) staining.