

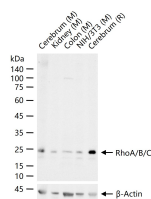
bsm-61200R**[Primary Antibody]****RhoA/B/C Recombinant Rabbit mAb****BioSS**
ANTIBODIES

www.bioss.com.cn

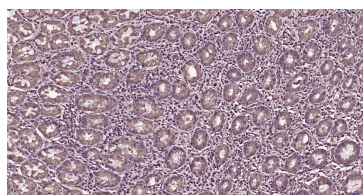
sales@bioss.com.cn

techsupport@bioss.com.cn

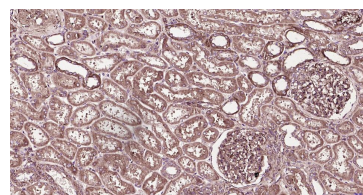
400-901-9800

— DATASHEET —**Host:** Rabbit**Isotype:** IgG**Clonality:** Recombinant**CloneNo.:** 5E6**GeneID:** 387**SWISS:** P61586**Target:** RhoA/B/C**Immunogen:** A synthesized peptide derived from human RhoA: 1-193.**Purification:** affinity purified by Protein A**Storage:** 10mM phosphate buffered saline(pH 7.4) with 150mM sodium chloride, 0.05% BSA, 0.02% Proclin300 and 50% glycerol. Store at 4°C for short term. Store at -20°C for long term. Avoid repeated freeze/thaw cycles.**Background:** RhoA , RhoB , RhoC is a small G protein of the Rho family. Regulates a signal transduction pathway linking plasma membrane receptors to the assembly of focal adhesions and actin stress fibers. The three mammalian Rho proteins (A, B and C) are approximately 30% homologous to Ras and are expressed in a wide range of cell types. Both Ras p21 and Rho p21, as well as other members of the Ras superfamily, contain a carboxy terminal CAAX sequence (C, cysteine; A, aliphatic amino acid; X, any amino acid) which in the case of Ras has been shown to be essential for correct localization and function.**Applications:** **WB** (1:1000-2000)**IHC-P** (1:100-500)**IHC-F** (1:100-500)**IF** (1:100-500)**ICC/IF** (1:50-200)**Reactivity:** Human, Mouse, Rat**Predicted
MW.:** 22**Subcellular
Location:** Cell membrane ,Cytoplasm**— VALIDATION IMAGES —**

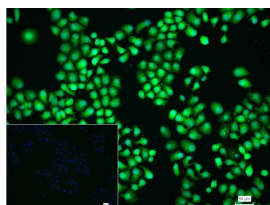
25 ug total protein per lane of various lysates (see on figure) probed with RhoA/B/C monoclonal antibody, unconjugated (bsm-61200R) at 1:1000 dilution and 4°C overnight incubation. Followed by conjugated secondary antibody incubation at r.t. for 60 min.



Paraformaldehyde-fixed, paraffin embedded Human stomach; Antigen retrieval by boiling in sodium citrate buffer (pH6.0) for 15 min; Antibody incubation with RhoA/B/C Monoclonal Antibody, Unconjugated (bsm-61200R) at 1:200 overnight at 4°C, followed by conjugation to the bs-0295G-HRP and DAB (C-0010) staining.



Paraformaldehyde-fixed, paraffin embedded Human kidney; Antigen retrieval by boiling in sodium citrate buffer (pH6.0) for 15 min; Antibody incubation with RhoA/B/C Monoclonal Antibody, Unconjugated (bsm-61200R) at 1:200 overnight at 4°C, followed by conjugation to the bs-0295G-HRP and DAB (C-0010) staining.



4% Paraformaldehyde-fixed HepG2 (H) cell; Triton X-100 at r.t. for 20 min; Antibody incubation with (RhoA/B/C) monoclonal Antibody, unconjugated (bsm-61200R) 1:100, 90 min at 37°C; followed by conjugated Goat Anti-Rabbit IgG antibody (green, bs-60295G-FITC) at 37°C for 90 min, DAPI (blue, C02-04002) was used to stain the cell nuclei. PBS instead of the primary antibody was used as the blank control.