

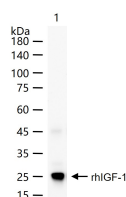
**bsm-61189R****[ Primary Antibody ]**

www.bioss.com.cn

sales@bioss.com.cn

techsupport@bioss.com.cn

400-901-9800

**IGF 1 Recombinant Rabbit mAb****— DATASHEET —****Host:** Rabbit**Isotype:** IgG**Clonality:** Recombinant**CloneNo.:** 11D4**GeneID:** 3479**SWISS:** P05019**Target:** IGF 1**Immunogen:** A synthesized peptide derived from human IGF1: 100-155.**Purification:** affinity purified by Protein A**Storage:** 10mM phosphate buffered saline(pH 7.4) with 150mM sodium chloride, 0.05% BSA, 0.02% Proclin300 and 50% glycerol. Store at 4°C for short term. Store at -20°C for long term. Avoid repeated freeze/thaw cycles.**Background:** The insulin-like growth factors, isolated from plasma, are structurally and functionally related to insulin but have a much higher growth-promoting activity. May be a physiological regulator of [1-14C]-2-deoxy-D-glucose (2DG) transport and glycogen synthesis in osteoblasts.**Applications:** WB (1:500-2000)**Reactivity:** Human**Predicted  
MW.:** 22**Subcellular  
Location:** Secreted**— VALIDATION IMAGES —**

20 ng rhIGF-1 protein, Trx & His (bs-41216P) per lane probed with IGF 1 monoclonal antibody respectively, unconjugated (bsm-61189R) at 1:1000 dilution and 4°C overnight incubation. Followed by corresponding conjugated secondary antibody incubation at r.t. for 60 min.