

### [ Primary Antibody ]

## HSP60 Recombinant Rabbit mAb



**BioSS**  
ANTIBODIES

www.bioss.com.cn

sales@bioass.com.cn

techsupport@bioss.com.cn

400-901-9800

## — DATASHEET

**Host:** Rabbit

**Isotype:** IgG

**Clonality:** Recombinant

**CloneNo.:** 9A8

**GeneID:** 3329

**SWISS:** P10809

**Target:** HSP60

**Immunogen:** A synthesized peptide derived from human Hsp60: 420-460.

**Purification:** affinity purified by Protein A

**Storage:** 10mM phosphate buffered saline(pH 7.4) with 150mM sodium chloride, 0.05% BSA, 0.02% Proclin300 and 50% glycerol. Store at 4°C for short term. Store at -20°C for long term. Avoid repeated freeze/thaw cycles.

**Background:** Chaperonin implicated in mitochondrial protein import and macromolecular assembly. Together with Hsp10, facilitates the correct folding of imported proteins. May also prevent misfolding and promote the refolding and proper assembly of unfolded polypeptides generated under stress conditions in the mitochondrial matrix.

**Applications: WB (1:500-2000)**

**IHC-P** (1:50-200)

**IHC-F (1:50-200)**

**IF (1:50-200)**

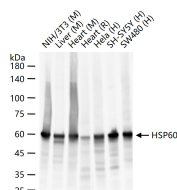
**ICC/IF (1:50-200)**

**Reactivity:** Human, Mouse, Rat

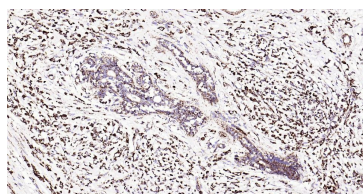
**Predicted**  
**MW.:** 61

**Subcellular Location:** Cytoplasm

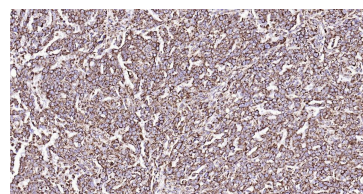
— VALIDATION IMAGES



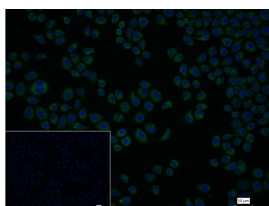
25 ug total protein per lane of various lysates (see on figure) probed with HSP60 monoclonal antibody, unconjugated (bsm-61183R) at 1:2000 dilution and 4°C overnight incubation. Followed by conjugated secondary antibody incubation at r.t. for 60 min.



Paraformaldehyde-fixed, paraffin embedded Human Breast Cancer; Antigen retrieval by boiling in sodium citrate buffer (pH6.0) for 15 min; Antibody incubation with HSP60 Monoclonal Antibody, Unconjugated(bsm-61183R) at 1:200 overnight at 4°C, followed by conjugation to the SP Kit (Rabbit, SP-0023) and DAB (C-0010) staining.



Paraformaldehyde-fixed, paraffin embedded Human Ovarian Cancer; Antigen retrieval by boiling in sodium citrate buffer (pH6.0) for 15 min; Antibody incubation with HSP60 Monoclonal Antibody, Unconjugated (bsm-61183R) at 1:200 overnight at 4°C, followed by conjugation to the SP Kit (Rabbit, SP-0023) and DAB (C-0010) staining.



4% Paraformaldehyde-fixed Hela (H) cell; Triton X-100 at r.t. for 20 min; Antibody incubation with (HSP60) monoclonal Antibody, unconjugated (bsm-61183R) 1:100, 90 min at 37°C; followed by conjugated Goat Anti-Rabbit IgG antibody (green, bs-60295G-FITC) at 37°C for 90 min, DAPI (blue, C02-04002) was used to stain the cell nuclei. PBS instead of the primary antibody was used as the blank control.

Important Note: This product as supplied is intended for research use only, not for use in human, therapeutic or diagnostic applications.